

PART OF THE N 1/2, OF SECTION 32, T.7N., R.1W., S.L.B. & M.

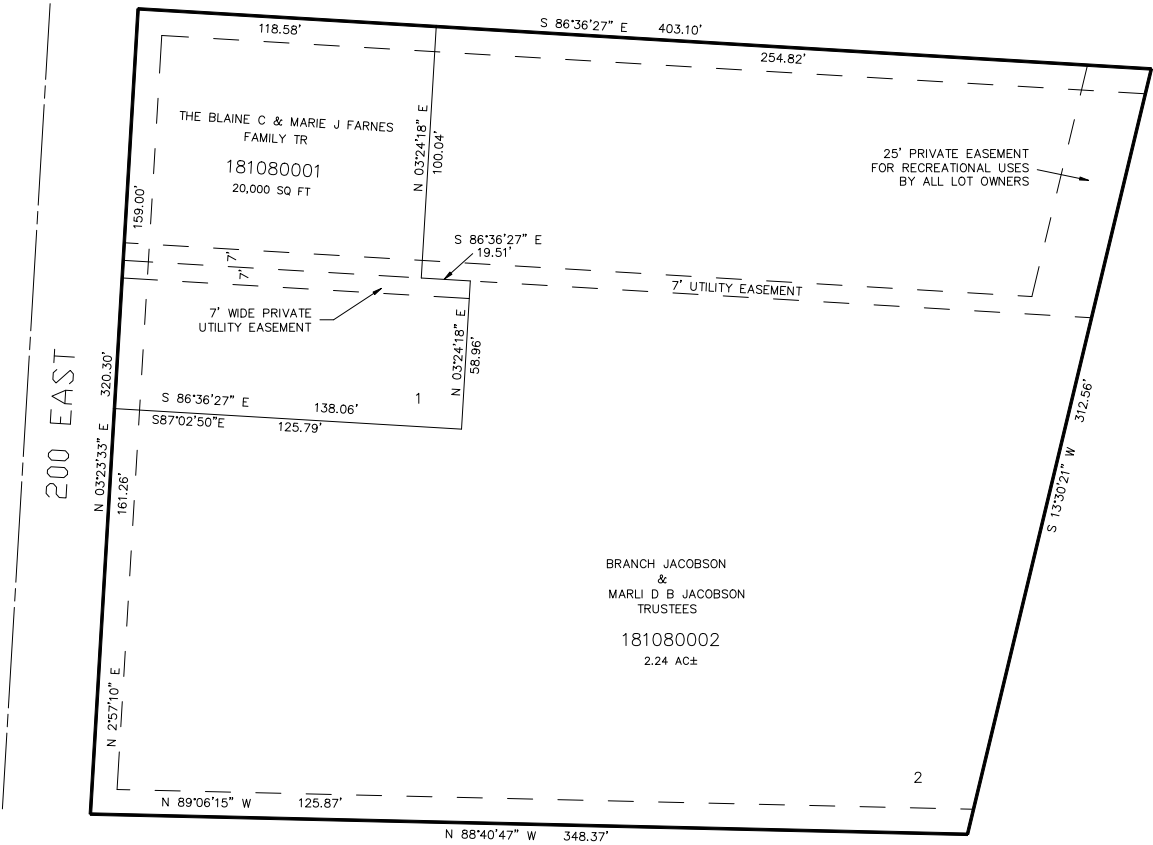
SPRING ACRES

IN NORTH OGDEN CITY

TAXING UNIT: 10

SCALE 1" = 40'

SEE PAGE 58



SEE PAGE 58

SEE PAGE 58

SEE PAGE 58

10' UTILITY & DRAINAGE EASEMENTS EACH
SIDE OF PROPERTY LINES AS INDICATED
BY DASHED LINES EXCEPT AS OTHERWISE
SHOWN.

FOR COMPLETE ENG DATA SEE
ORIGINAL DEDICATION PLAT IN
BOOK 53, PAGE 79 OF RECORDS.

FOR TAX PURPOSES ONLY

JC 4-01