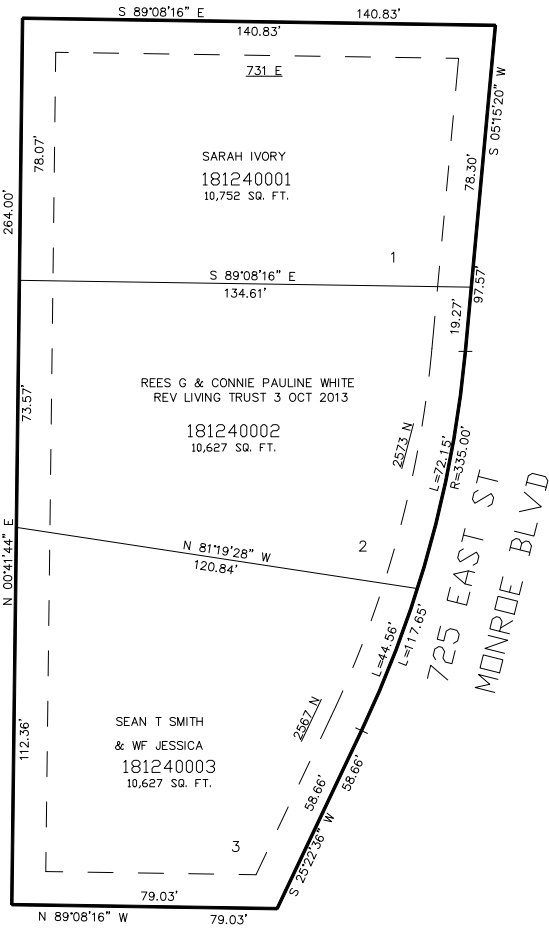


PART OF THE NW.1/4, OF SECTION 33, T.7N., R.1W., S.L.B. & M.
HEITZ ESTATES
IN NORTH OGDEN CITY
TAXING UNIT: 10
SCALE 1" = 30'

SEE PAGE 2

2600 NORTH ST

SEE PAGE 2



SEE BOOK 17 PAGE 74

SEE PAGE 2

10' UTILITY & DRAINAGE EASEMENTS EACH
SIDE OF PROPERTY LINES AS INDICATED
BY DASHED LINES EXCEPT AS OTHERWISE
SHOWN.

FOR COMPLETE ENG DATA SEE
ORIGINAL DEDICATION PLAT IN
BOOK 61, PAGE 95 OF RECORDS.