

PART OF THE E.1/2, OF SECTION 32, T.7N., R.1W., S.L.B. & M.
COLDWATER BUSINESS PARK CONDOMINIUMS, AMENDED

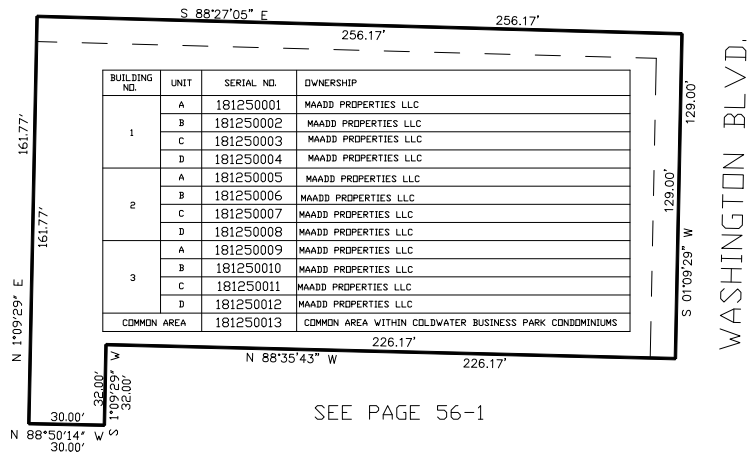
IN NORTH OGDEN CITY
SCALE 1" = 40'
SEE PAGE 56-1

TAXING UNIT: 10

2275 NORTH STREET

SEE PAGE 126

SEE PAGE 56-1



SEE PAGE 56-1

10' UTILITY & DRAINAGE EASEMENTS EACH
SIDE OF PROPERTY LINES AS INDICATED
BY DASHED LINES EXCEPT AS OTHERWISE
SHOWN.

FOR COMPLETE ENG DATA SEE
ORIGINAL DEDICATION PLAT IN
BOOK 62, PAGE 48 OF RECORDS.

FOR TAX PURPOSES ONLY