

PART OF THE NE.1/4 OF SECTION 32 AND THE NW.1/4, OF SECTION 33, T.7N., R.1W., S.L.B. & M.

136

NORTH POINTE CENTER SUBDIVISION FIRST AMENDMENT

IN NORTH OGDEN CITY

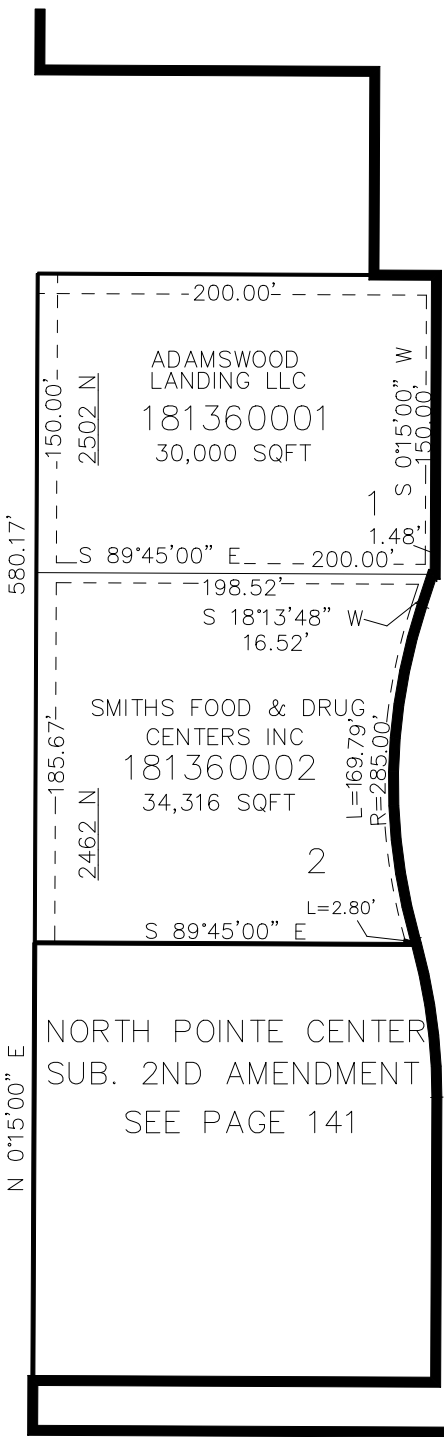
TAXING UNIT: 273

SCALE 1" = 60'

SEE PAGE 46

SEE PAGE 46

WASHINGTON BLVD.



NORTH POINTE CENTER
SUB. THIRD AMENDMENT
SEE PAGE 146

10' UTILITY & DRAINAGE EASEMENTS EACH
SIDE OF PROPERTY LINES AS INDICATED
BY DASHED LINES EXCEPT AS OTHERWISE
SHOWN.

SEE PAGE 45

FOR COMPLETE ENG DATA SEE
ORIGINAL DEDICATION PLAT IN
BOOK 70, PAGE 30 OF RECORDS.