

PART OF THE NE, 1/4, OF SECTION 26, T.7N., R.2W., S.L.B. & M.

119

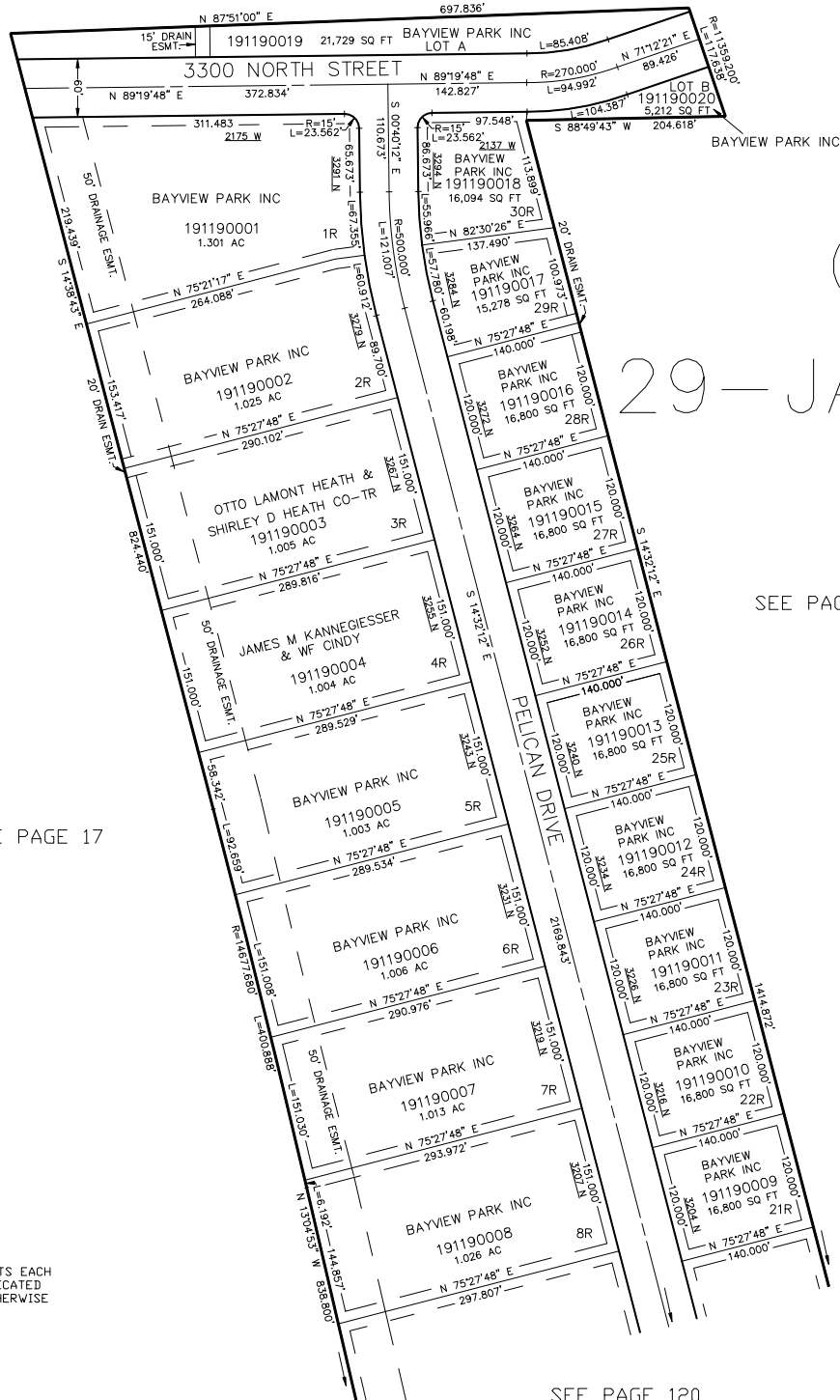
# BAYVIEW PARK INC.

IN FARR WEST CITY

TAXING UNIT: 145

SCALE 1" = 100'

SEE PAGE 17



OMITTED  
29-JAN-1999

SEE PAGE 17

SEE PAGE 17

FOR COMPLETE ENG DATA SEE  
ORIGINAL DEDICATION PLAT IN  
BOOK 46, PAGE 69 OF RECORDS.

NOTE: RESTRICTED OR "R" LOTS  
ARE LIMITED TO HOMES WITHOUT  
BASEMENTS WITH THE LOWEST  
FINISH FLOOR ELEVATION A  
MINIMUM OF 18 INCHES ABOVE  
THE LOWEST TOP BACK OF THE  
CURB ELEVATION ON THE LOT  
FRONTAGE

10' UTILITY & DRAINAGE EASEMENTS EACH  
SIDE OF PROPERTY LINES AS INDICATED  
BY DASHED LINES EXCEPT AS OTHERWISE  
SHOWN.

SEE PAGE 120

\*FOR TAX PURPOSES ONLY\*

PW 5-98