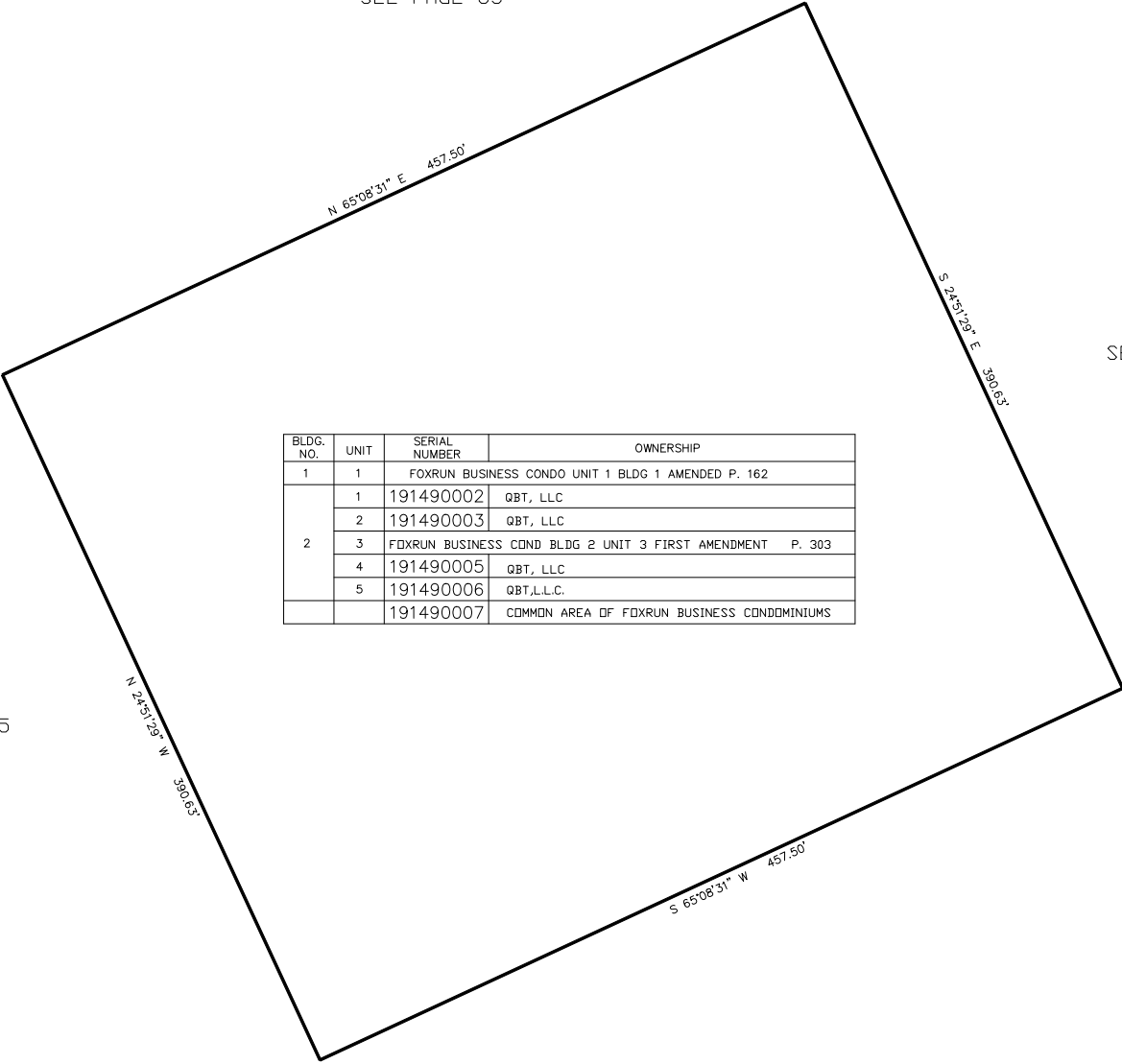


PART OF THE S.E. 1/4, OF SECTION 36, T.7N., R.2W., S.L.B. & M.
FOXRUN BUSINESS CONDOMINIUMS

IN WEBER COUNTY
SCALE 1" = 50'

TAXING UNIT: 17

SEE PAGE 65



SEE PAGE 65

BLDG. NO.	UNIT	SERIAL NUMBER	OWNERSHIP
1	1	FOXRUN BUSINESS CONDO UNIT 1 BLDG 1 AMENDED P. 162	
2	1	191490002	QBT, LLC
	2	191490003	QBT, LLC
	3	FOXRUN BUSINESS COND BLDG 2 UNIT 3 FIRST AMENDMENT P. 303	
	4	191490005	QBT, LLC
	5	191490006	QBT, L.L.C.
		191490007	COMMON AREA OF FOXRUN BUSINESS CONDOMINIUMS

SEE PAGE 65

SEE PAGE 65

FOR COMPLETE ENG DATA SEE
ORIGINAL DEDICATION PLAT IN
BOOK 52, PAGE 59 OF RECORDS.