

PART OF THE SE.1\4, OF SECTION 36, T.7N., R.2W., S.L.B. & M.
AMENDED PLAT OF UNIT 1 BUILDING 1
FOX RUN BUSINESS CONDOMINIUMS

IN WEBER COUNTY

TAXING UNIT: 17

SCALE 1" = 30'

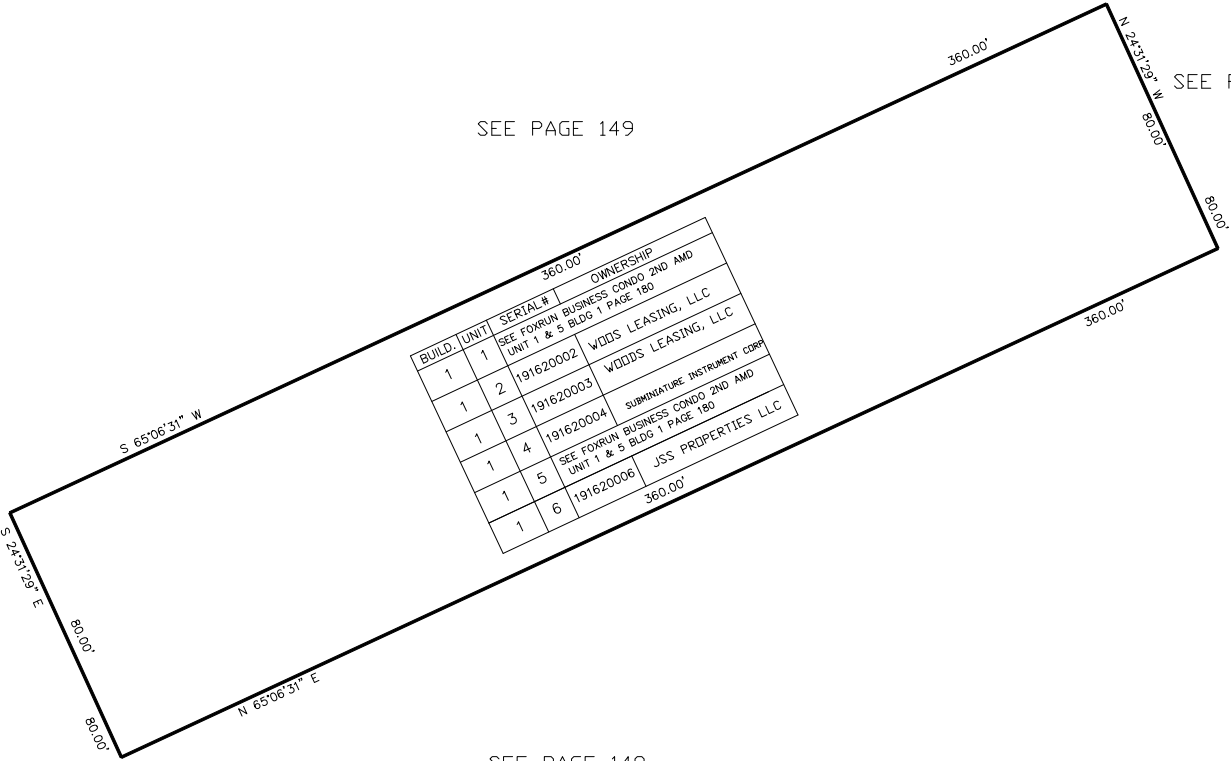
SEE PAGE 149

SEE PAGE 149

SEE PAGE 149

SEE PAGE 149

BUILD.	UNIT	SERIAL#	OWNERSHIP
1	1	SEE FOXRUN BUSINESS CONDO 2ND AMD UNIT 1 & 5 BLDG 1 PAGE 180	
1	2	191620002	WOODS LEASING, LLC
1	3	191620003	WOODS LEASING, LLC
1	4	191620004	SUBMINUTURE INSTRUMENT CORP
1	5	SEE FOXRUN BUSINESS CONDO 2ND AMD UNIT 1 & 5 BLDG 1 PAGE 180	
1	6	191620006	JSS PROPERTIES LLC



10' UTILITY & DRAINAGE EASEMENTS EACH
SIDE OF PROPERTY LINES AS INDICATED
BY DASHED LINES EXCEPT AS OTHERWISE
SHOWN.

FOR COMPLETE ENG DATA SEE
ORIGINAL DEDICATION PLAT IN
BOOK 54, PAGE 30 & 31 OF RECORDS.