

PART OF THE SE.1/4, OF SECTION 36, T.7N., R.2W., S.L.B. & M.
SUBDIVISION OF LOT 41 OF WEBER INDUSTRIAL PARK PLAT "B"

IN WEBER COUNTY

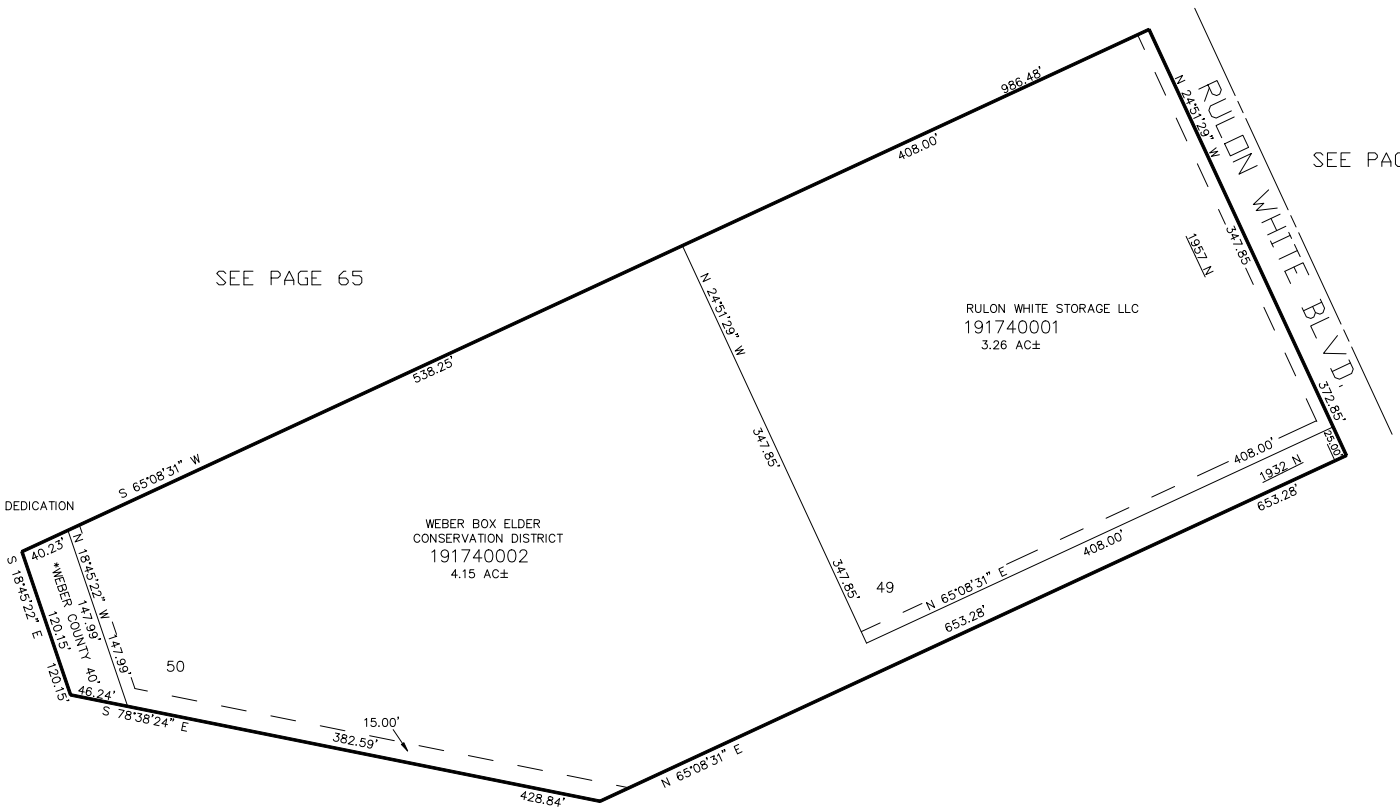
TAXING UNIT: 17

SCALE 1" = 80'

SEE PAGE 65

SEE PAGE 65

*EXCEPTED IN DEDICATION



SEE PAGE 65

FOR COMPLETE ENG DATA SEE
ORIGINAL DEDICATION PLAT IN
BOOK 56, PAGE 32 OF RECORDS.

10' UTILITY & DRAINAGE EASEMENTS EACH
SIDE OF PROPERTY LINES AS INDICATED
BY DASHED LINES EXCEPT AS OTHERWISE
SHOWN.

FOR TAX PURPOSES ONLY