

PART OF THE N.1/2, OF SECTION 36, T.7N., R.2W., S.L.B. & M.
WEBER INDUSTRIAL PARK PLAT "D" LOT 3A
A CONDOMINIUM DEVELOPMENT

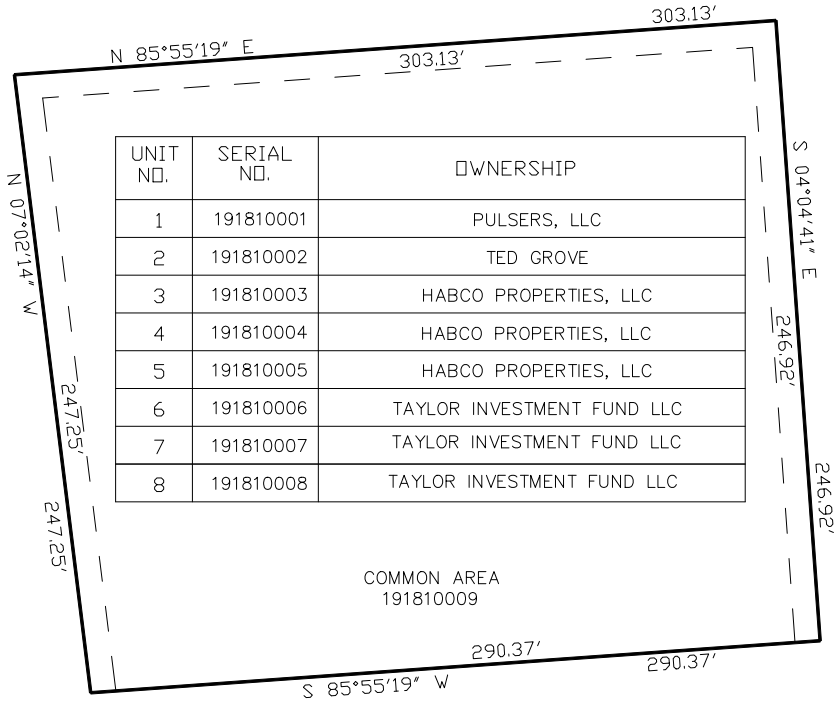
TAXING UNIT: 17

IN WEBER COUNTY
SCALE 1" = 40'

SEE PAGE 157

SEE PAGE 157

SEE PAGE 157



FOR COMPLETE ENG DATA SEE
ORIGINAL DEDICATION PLAT IN
BOOK 57, PAGE 46 OF RECORDS.

10' UTILITY & DRAINAGE EASEMENTS EACH
SIDE OF PROPERTY LINES AS INDICATED
BY DASHED LINES EXCEPT AS OTHERWISE
SHOWN.