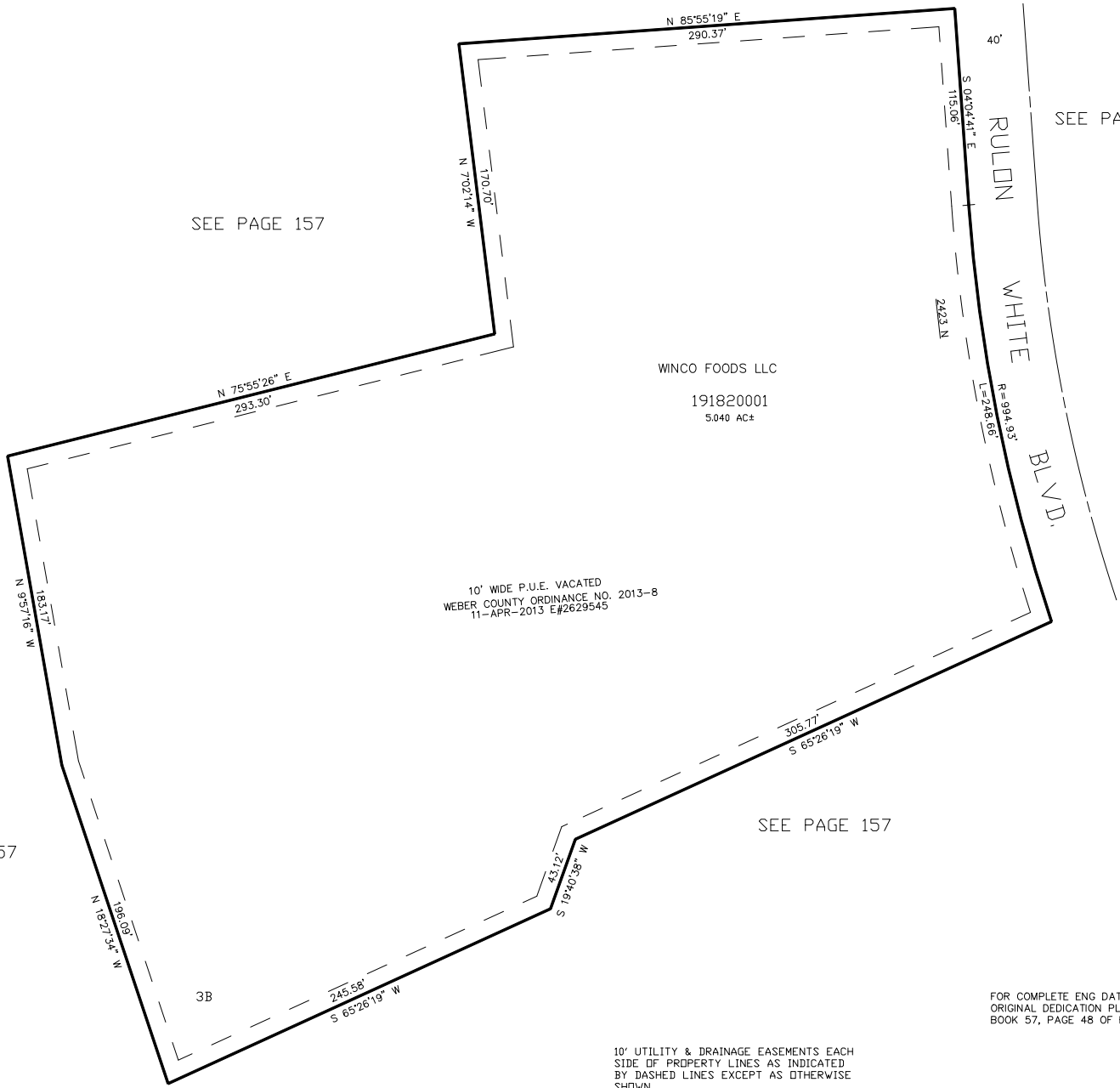


PART OF THE NORTH 1/2, OF SECTION 36, T.7N., R.2W., S.L.B. & M.
WEBER INDUSTRIAL PARK PLAT "D" LOT 3B

IN WEBER COUNTY
SCALE 1" = 50'

TAXING UNIT: 17



FOR COMPLETE ENG DATA SEE
ORIGINAL DEDICATION PLAT IN
BOOK 57, PAGE 48 OF RECORDS.