

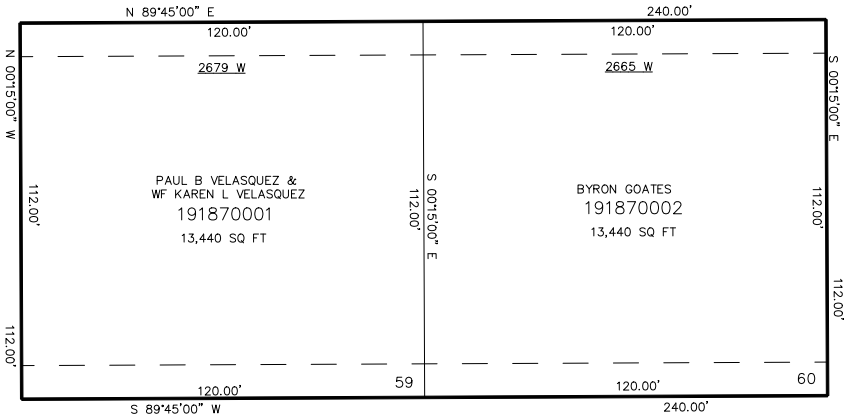
PART OF THE NW.1/4, OF SECTION 23, T.7N., R.2W., S.L.B. & M.  
AMENDMENT TO REMUDA SUBDIVISION & GOLF COURSE—PHASE 1

TAXING UNIT: 145

IN FARR WEST CITY  
SCALE 1" = 30'

SEE PAGE 136

3850 NORTH STREET



SEE PAGE 136

SEE PAGE 136

SEE PAGE 11

10' UTILITY & DRAINAGE EASEMENTS EACH  
SIDE OF PROPERTY LINES AS INDICATED  
BY DASHED LINES EXCEPT AS OTHERWISE  
SHOWN.

FOR COMPLETE ENG DATA SEE  
ORIGINAL DEDICATION PLAT IN  
BOOK 58, PAGE 17 OF RECORDS.