

PART OF THE N.1/2, OF SECTION 22, T.7N., R.2W., S.L.B. & M.
DENNIS SPENCER ONE LOT SUBDIVISION

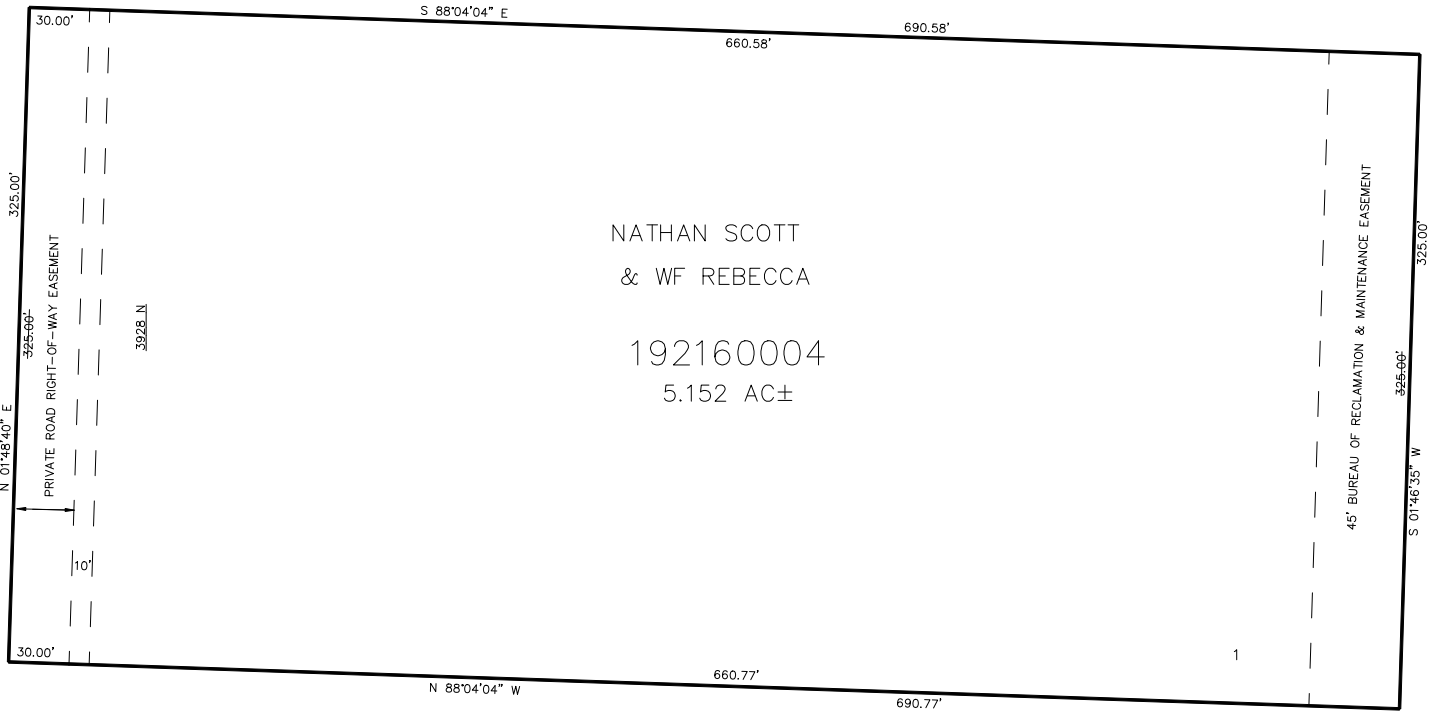
IN WEBER COUNTY

TAXING UNIT: 19

SCALE 1" = 50'

SEE PAGE 10

3175 WEST STREET



SEE PAGE 10

10' UTILITY & DRAINAGE EASEMENTS EACH
SIDE OF PROPERTY LINES AS INDICATED
BY DASHED LINES EXCEPT AS OTHERWISE
SHOWN.

FOR COMPLETE ENG DATA SEE
ORIGINAL DEDICATION PLAT IN
BOOK 61, PAGE 63 OF RECORDS.

FOR TAX PURPOSES ONLY