

PART OF THE NE.1/4, OF SECTION 27, T.7N., R.2W., S.L.B. & M.  
TOP RAMEN SUBDIVISION AMENDED

295

TAXING UNIT: 21

IN PLAIN CITY  
SCALE 1" = 30'

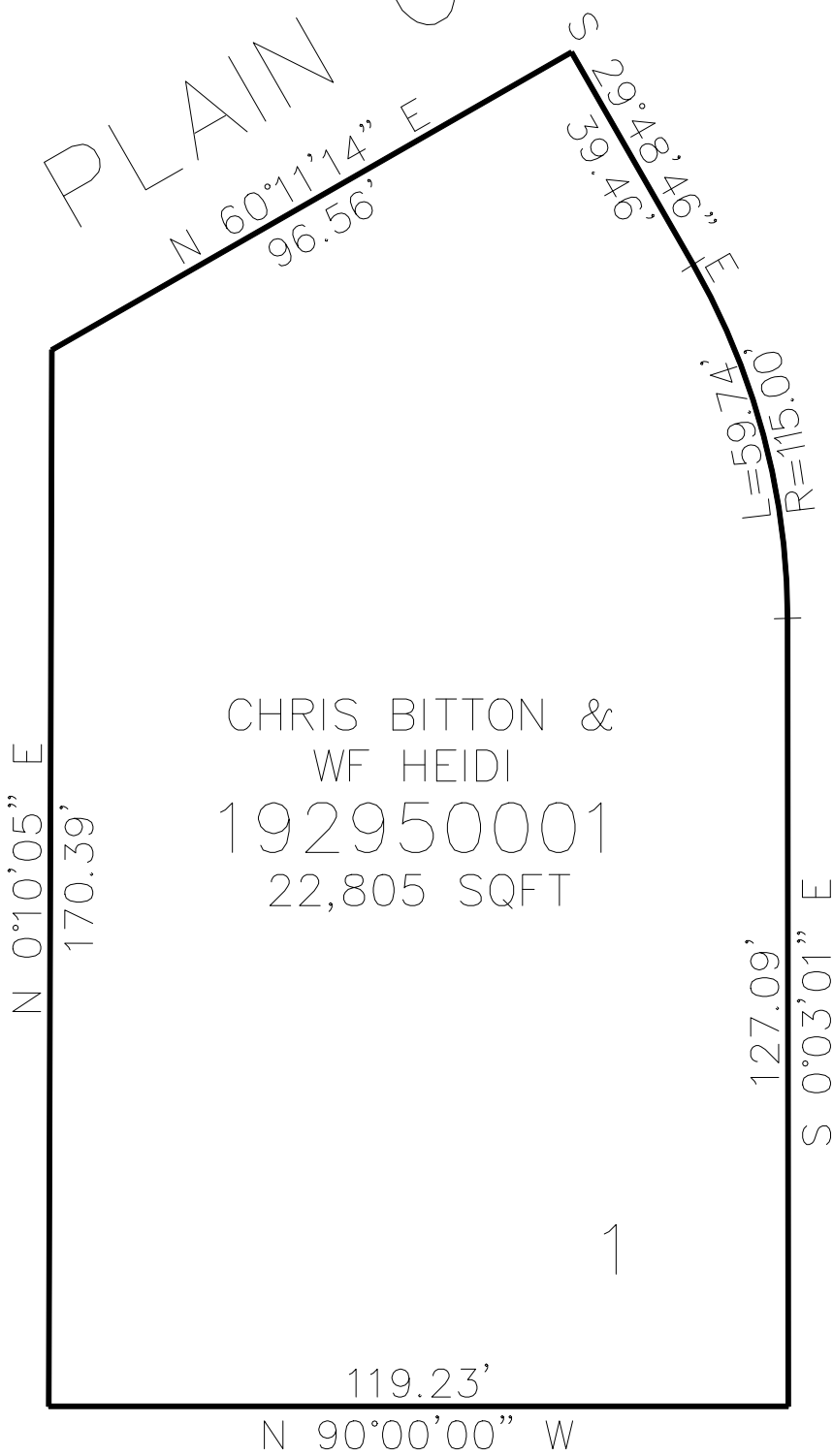
SEE PAGE 20

NORTH PLAIN CITY ROAD

CHRIS BITTON &  
WF HEIDI  
192950001  
22,805 SQFT

SEE PAGE 156

SEE PAGE 20



SEE PAGE 20

10' UTILITY & DRAINAGE EASEMENTS EACH  
SIDE OF PROPERTY LINES AS INDICATED  
BY DASHED LINES EXCEPT AS OTHERWISE  
SHOWN.

FOR COMPLETE ENG DATA SEE  
ORIGINAL DEDICATION PLAT IN  
BOOK 72, PAGE 32 OF RECORDS.