

PART OF THE SE.1/4, OF SECTION 36, T.7N., R.2W., S.L.B. & M.

303

FOXRUN BUSINESS CONDOMINIUMS, BUILDING 2, UNIT 3 FIRST AMENDMENT

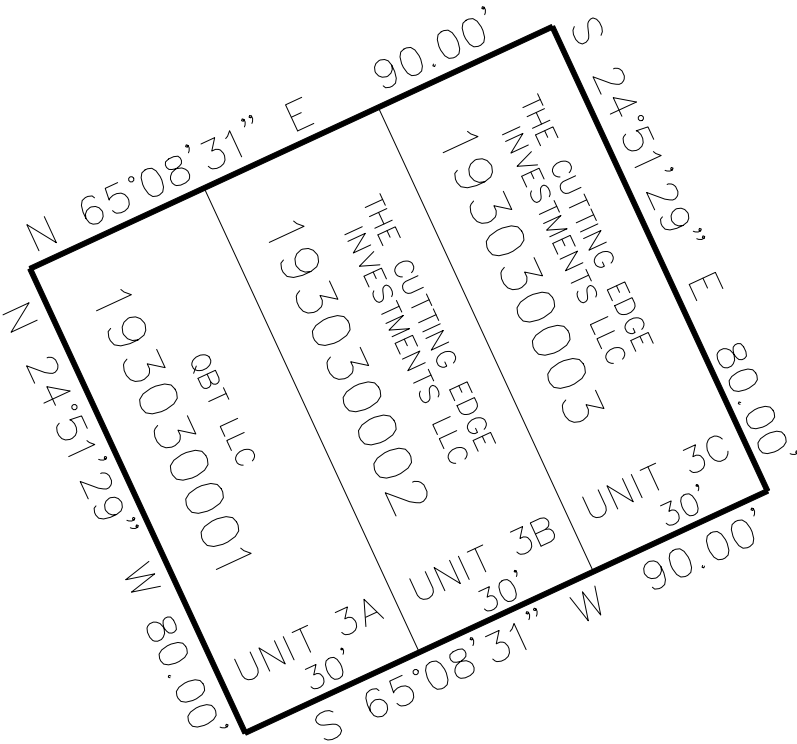
TAXING UNIT: 17

IN WEBER COUNTY

SCALE 1" = 30'

SEE PAGE 149

SEE PAGE 149



SEE PAGE 149

SEE PAGE 149

10' UTILITY & DRAINAGE EASEMENTS EACH  
SIDE OF PROPERTY LINES AS INDICATED  
BY DASHED LINES EXCEPT AS OTHERWISE  
SHOWN.

FOR COMPLETE ENG DATA SEE  
ORIGINAL DEDICATION PLAT IN  
BOOK 73, PAGE 33 & 34 OF RECORDS.