

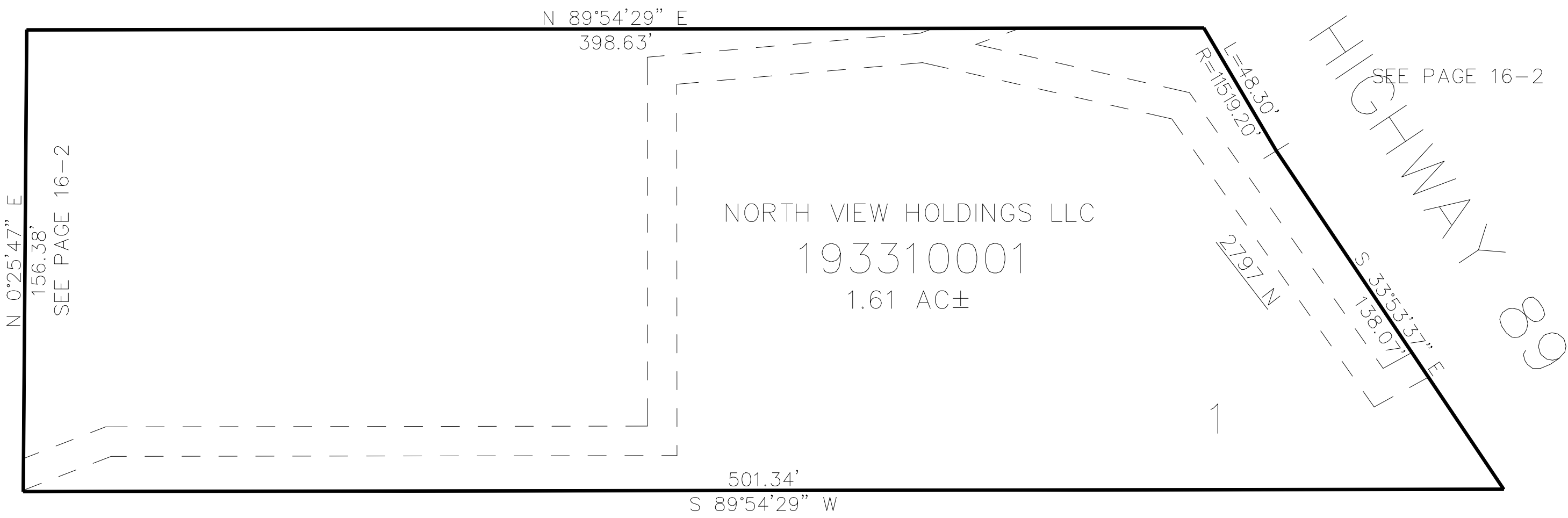
PART OF THE SE.1/4, OF SECTION 25, T.7N., R.2W., S.L.B. & M.
NORTH VIEW HOLDINGS LLC SUBDIVISION

331

TAXING UNIT: 7

IN WEBER COUNTY
SCALE 1" = 40'

SEE PAGE 16-2



10' UTILITY & DRAINAGE EASEMENTS EACH
SIDE OF PROPERTY LINES AS INDICATED
BY DASHED LINES EXCEPT AS OTHERWISE
SHOWN.

FOR COMPLETE ENG DATA SEE
ORIGINAL DEDICATION PLAT IN
BOOK 76, PAGE 59 OF RECORDS.