

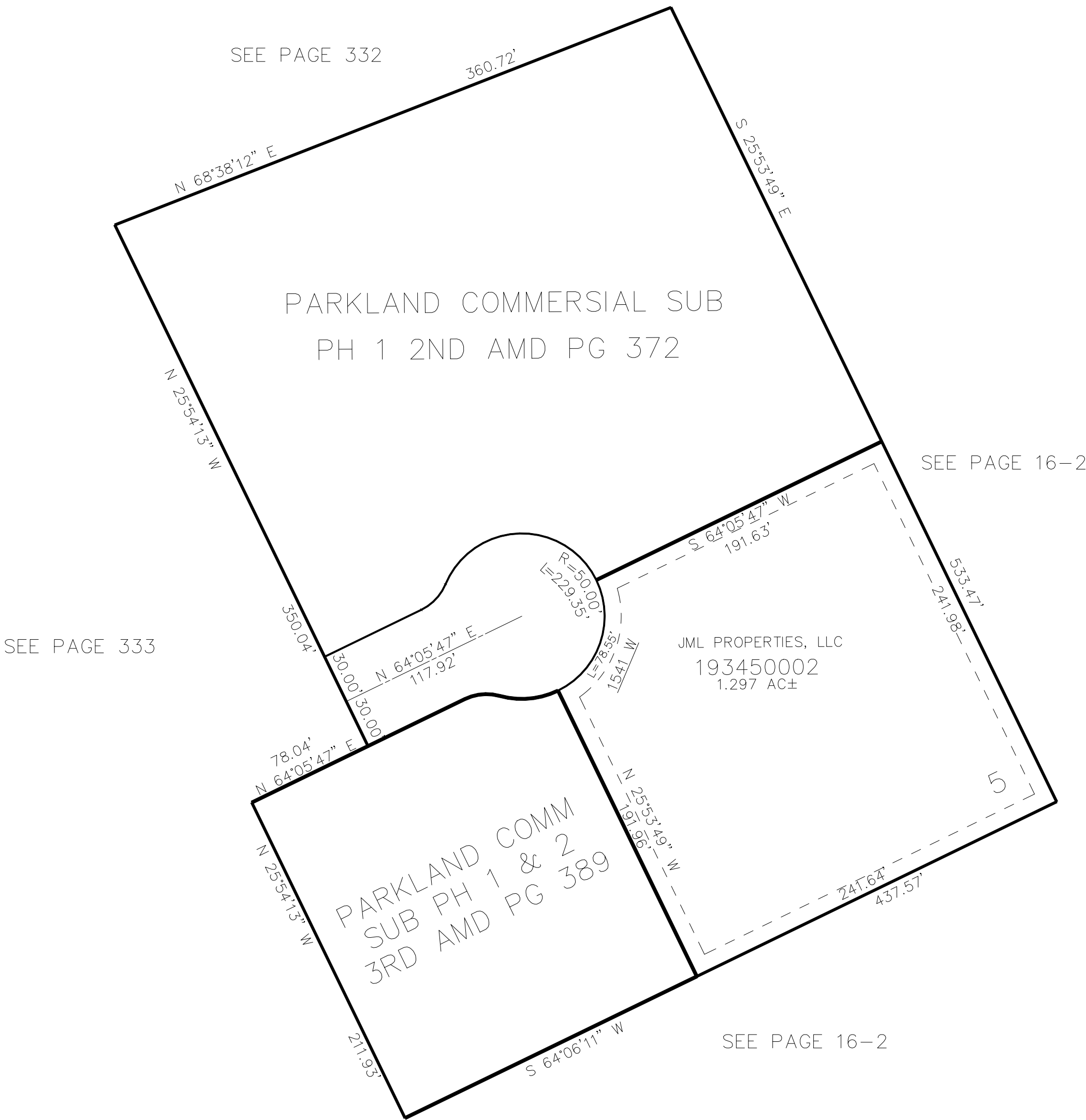
PART OF THE S.1/2 SECTION 25, T.7N., R.2 W. SALT LAKE BASE AND MERIDIAN  
PARKLAND COMMERCIAL SUB PHASE 2, 1ST AMENDMENT

345

TAXING UNIT: 430

IN PLEASANT VIEW CITY

SCALE 1" = 60'



10' UTILITY & DRAINAGE EASEMENTS EACH  
SIDE OF PROPERTY LINES AS INDICATED  
BY DASHED LINES EXCEPT AS OTHERWISE  
SHOWN.

FOR COMPLETE ENG DATA SEE  
ORIGINAL DEDICATION PLAT IN  
BOOK 79, PAGE 17 OF RECORDS.