

PART OF THE SOUTHEAST 1/4 & NORTHEAST 1/4, OF SECTION 33, T.7N., R2W., S.L.B. & M.  
BLUEGRASS ESTATES FIRST AMENDMENT

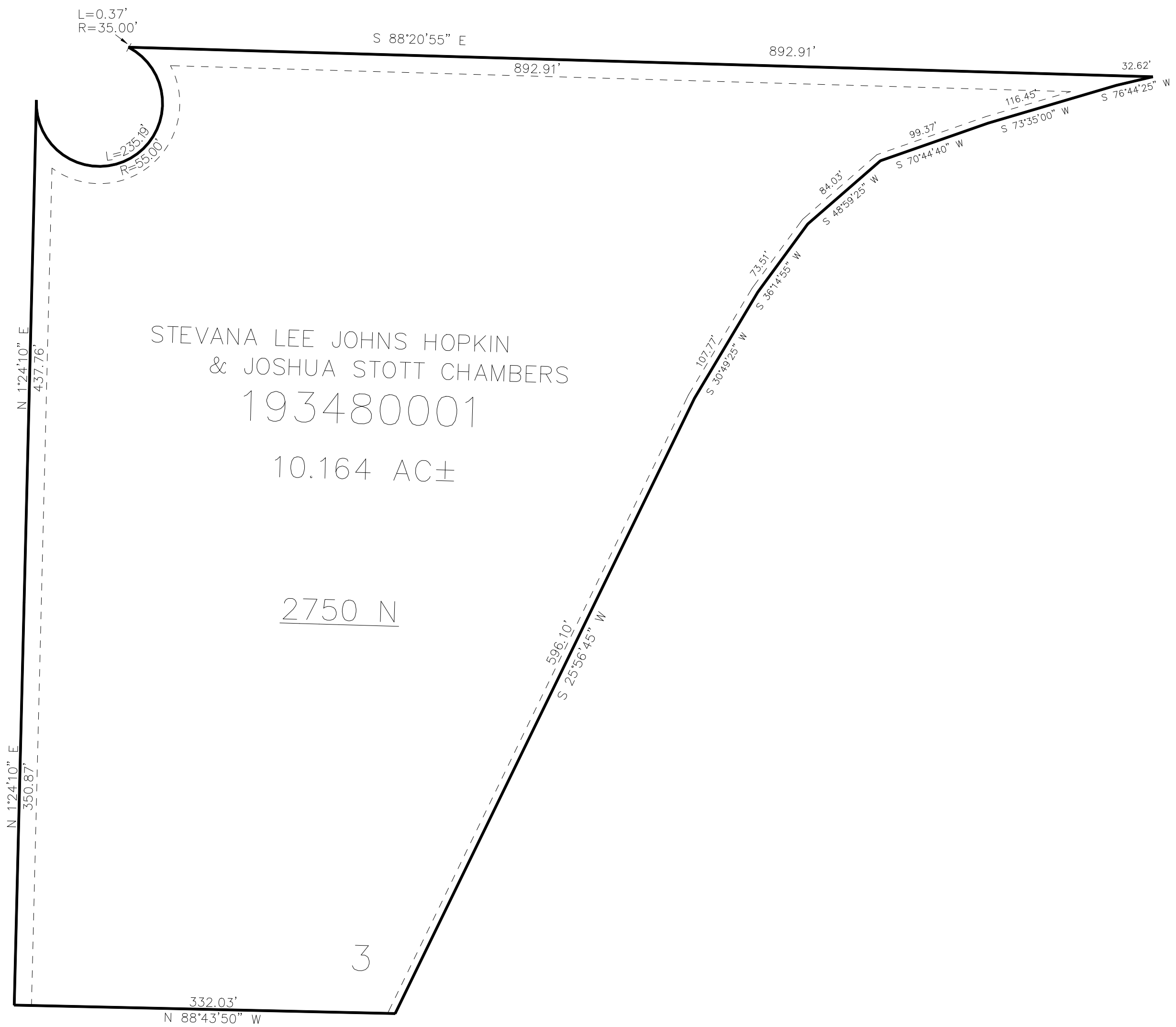
348

TAXING UNIT: 21

IN PLAIN CITY  
SCALE 1" = 80'

SEE PAGE 154

SEE PAGE 186



10' UTILITY & DRAINAGE EASEMENTS EACH  
SIDE OF PROPERTY LINES AS INDICATED  
BY DASHED LINES EXCEPT AS OTHERWISE  
SHOWN.

FOR COMPLETE ENG DATA SEE  
ORIGINAL DEDICATION PLAT IN  
BOOK 79, PAGE 30 OF RECORDS.