

PART OF THE W1/2, OF SECTION 23, T.6N., R.1E., S.L.B. & M.

BRANCH SUBDIVISION

IN WEBER COUNTY

SCALE 1" = 60'

TAXING UNIT: 58

SEE PAGE 35-2

N 54°13'13" E 552.92'
552.92'

N 47°11'52" W 504.99'
504.99'

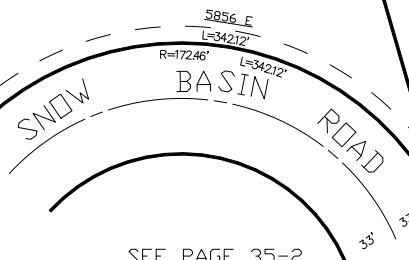
JAMES & DIANNE BRANCH LIVING TR JULY 8, 2015

200760001
5.00 AC±

S 16°07'20" E 743.93'
743.93'

SEE PAGE 35-2

SEE PAGE 35-2



SEE PAGE 35-2

FOR COMPLETE ENG DATA SEE
ORIGINAL DEDICATION PLAT IN
BOOK 54, PAGE 74 OF RECORDS.

10' UTILITY & DRAINAGE EASEMENTS EACH
SIDE OF PROPERTY LINES AS INDICATED
BY DASHED LINES EXCEPT AS OTHERWISE
SHOWN.

FOR TAX PURPOSES ONLY

KBL 10-01