

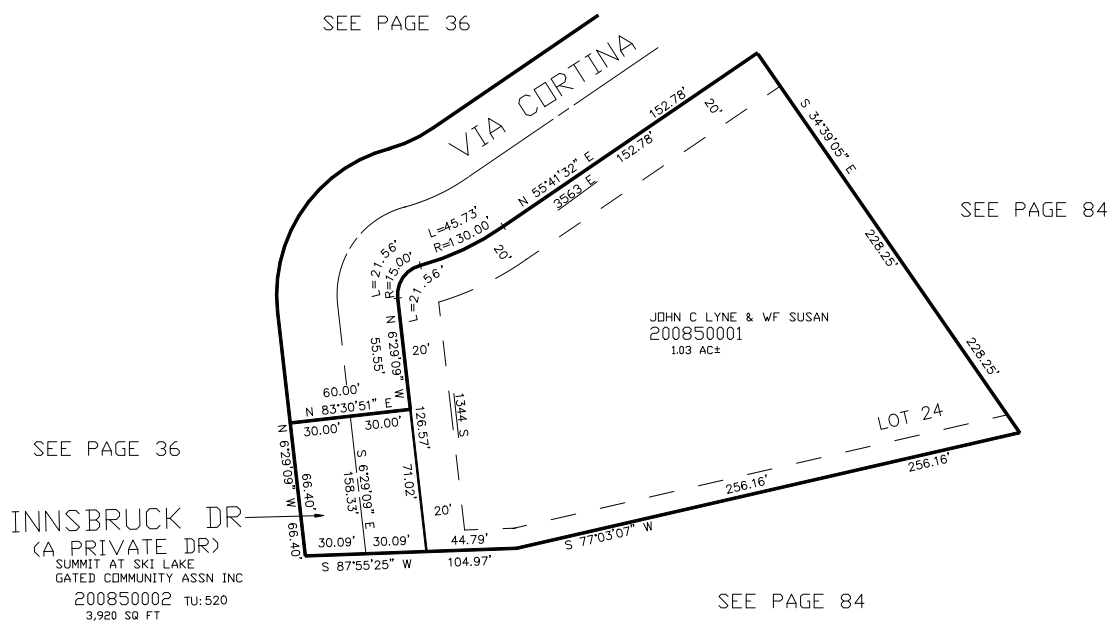
PART OF THE N1/2, OF SECTION 24, T.6N., R.1E., S.L.B. & M.

THE SUMMIT AT SKI LAKE NO. 6

IN WEBER COUNTY

SCALE 1" = 50'

TAXING UNIT: 58,520



FOR COMPLETE ENG DATA SEE
ORIGINAL DEDICATION PLAT IN
BOOK 58, PAGE 40 OF RECORDS.

10' UTILITY & DRAINAGE EASEMENTS EACH
SIDE OF PROPERTY LINES AS INDICATED
BY DASHED LINES EXCEPT AS OTHERWISE
SHOWN.

FOR TAX PURPOSES ONLY

KBL 09-2003