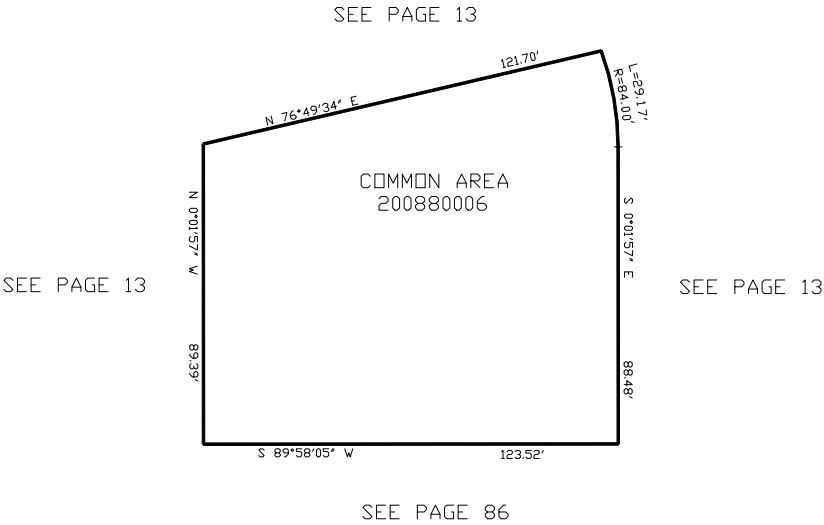


PART OF THE SW.14, OF SECTION 13, T.6N., R.1E., S.L.B. & M.
LAKESIDE VILLAGE PHASE 6 CONDOMINIUM

IN WEBER COUNTY
SCALE 1" = 30'

TAXING UNIT: 58



ADDRESS	UNIT	SERIAL #	OWNERSHIP
6486 E HWY 39	43	200880001	LAKESIDE 43, LLC
6486 E HWY 39	44	200880002	PDW DREAM FL LLC
6486 E HWY 39	45	200880003	IAIN HUETON & JENNIFER CLAESGENS TRUST DTD 11-26-2018
6486 E HWY 39	46	200880004	FIRST RESTATEMENT OF THE BERRYHILL FAMILY REV TRUST DTD 02-28-2001
6486 E HWY 39	47	200880005	MICHAEL P SCHMIDT & WF

10' UTILITY & DRAINAGE EASEMENTS EACH
SIDE OF PROPERTY LINES AS INDICATED
BY DASHED LINES EXCEPT AS OTHERWISE
SHOWN.

FOR COMPLETE ENG DATA SEE
ORIGINAL DEDICATION PLAT IN
BOOK 59, PAGE 74-76 OF RECORDS.