

PART OF THE SW.1/4, OF SECTION 13, T.6N., R.1E., S.L.B. & M.  
LAKESIDE VILLAGE PHASE 7 CONDOMINIUM

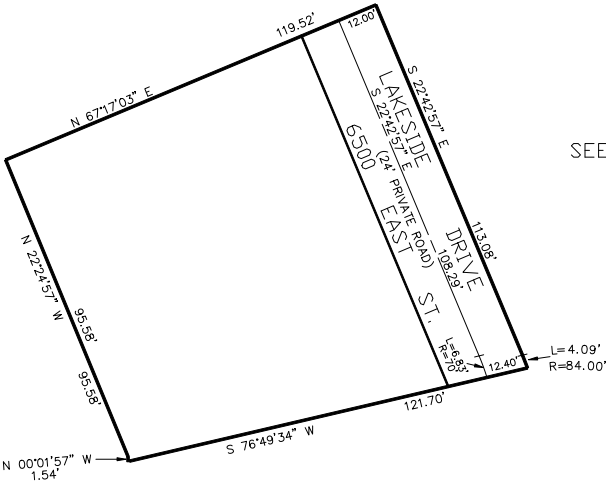
IN WEBER COUNTY  
SCALE 1" = 30'

TAXING UNIT: 58

SEE PAGE 13

SEE PAGE 13

ADDRESS	UNIT	SERIAL#	OWNERSHIP
6486 E HWY 39	48	200900001	JJ LAKESIDE VILLAGE LLC
6486 E HWY 39	49	200900002	LAKESIDE CONDO 49, LLC
6486 E HWY 39	50	200900003	KRINGEN HOLDINGS LLC
6486 E HWY 39	51	200900004	JENNA MARIE CANGELOSI FAMILY TRUST
6486 E HWY 39	52	200900005	SILVER KING 2 LLC
	C.A.	200900006	COMMON AREA



SEE PAGE 13

SEE PAGE 13

FOR COMPLETE ENG DATA SEE  
ORIGINAL DEDICATION PLAT IN  
BOOK 61, PAGE 30-32 OF RECORDS.

\*FOR TAX PURPOSES ONLY\*