

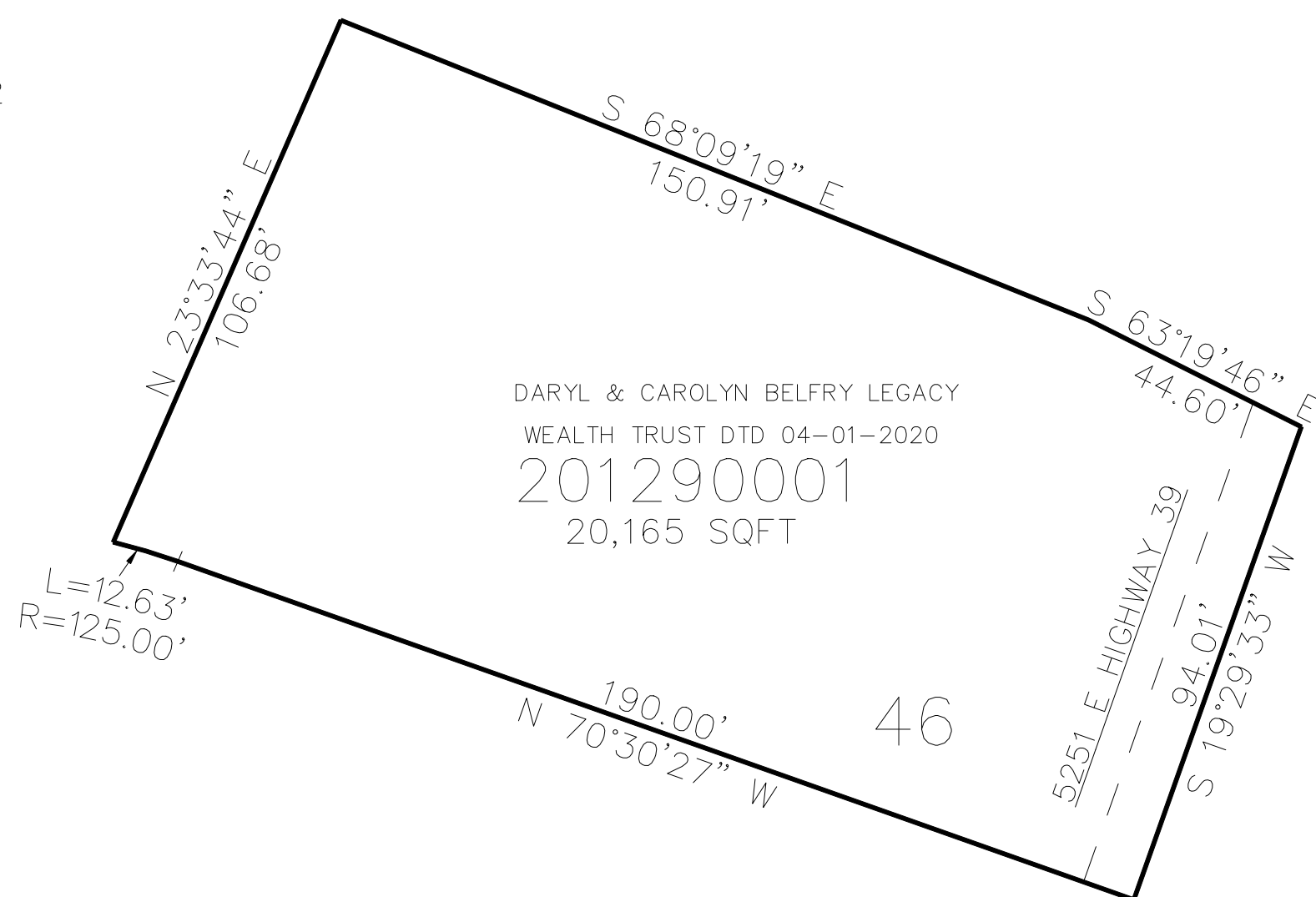
129

TAXING UNIT: 58

SCALE 1" = 30'

SEE PAGE 112

SEE PAGE 112



SEE PAGE 112

SEE PAGE 112

FOR COMPLETE ENG DATA SEE
ORIGINAL DEDICATION PLAT IN
BOOK 70, PAGE 17 OF RECORDS.