

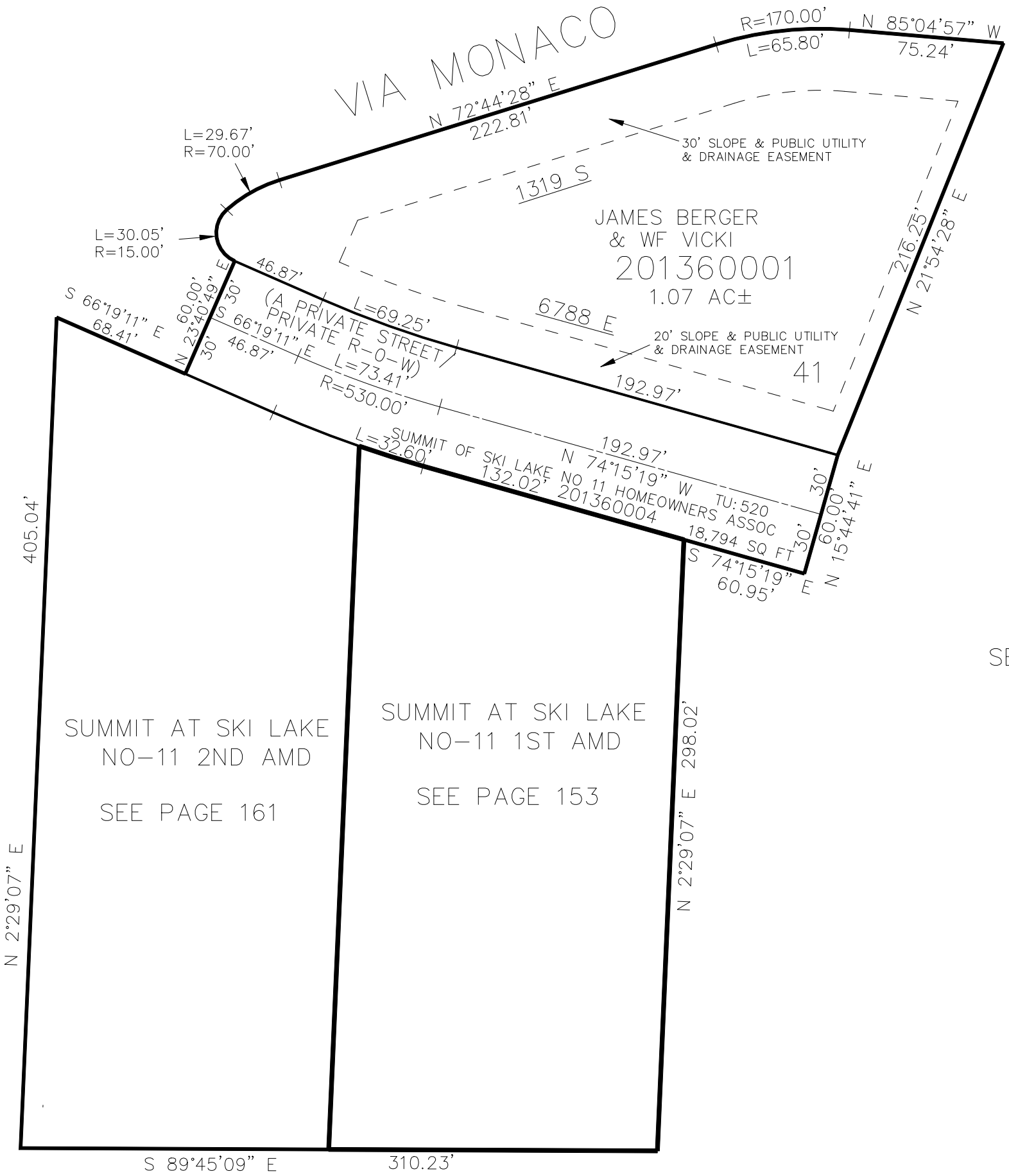
PART OF THE NE.1/4, OF SECTION 24, T.6N., R.1E., S.L.B. & M.  
THE SUMMIT AT SKI LAKE No. 11

136

TAXING UNIT: 58, 520

IN WEBER COUNTY  
SCALE 1" = 60'

SEE PAGE 36



SEE PAGE 36

SEE PAGE 36

10' UTILITY & DRAINAGE EASEMENTS EACH  
SIDE OF PROPERTY LINES AS INDICATED  
BY DASHED LINES EXCEPT AS OTHERWISE  
SHOWN.

SEE PAGE 36

FOR COMPLETE ENG DATA SEE  
ORIGINAL DEDICATION PLAT IN  
BOOK 72, PAGE 79 OF RECORDS.