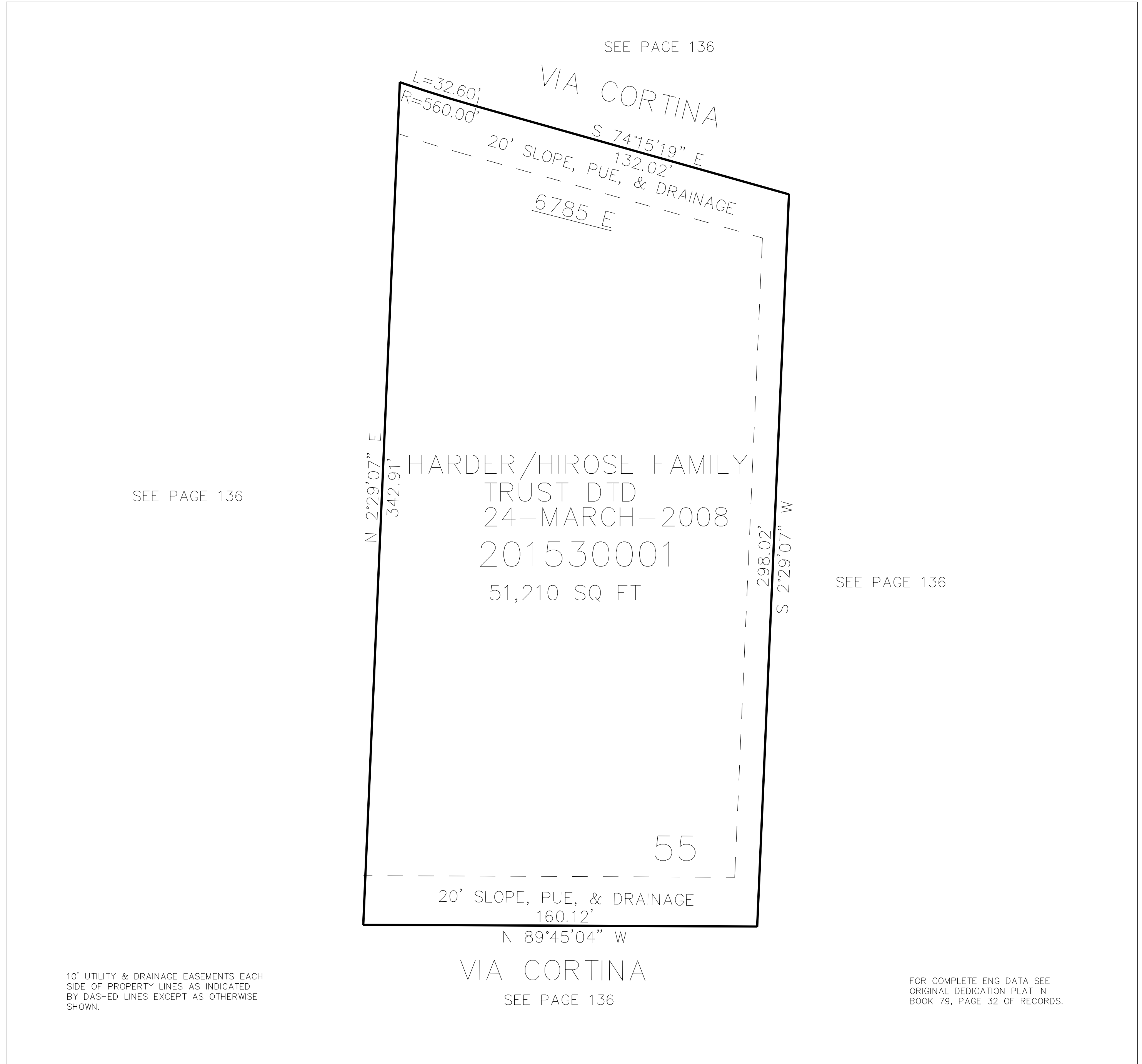


PART OF THE NW. 1/4, OF SECTION 24, T.6N., R.1E., S.L.B. & M.  
THE SUMMIT AT SKI LAKE NO. 11 1ST AMENDEMENT

153

TAXING UNIT: 58

IN WEBER COUNTY  
SCALE 1" = 30'



10' UTILITY & DRAINAGE EASEMENTS EACH  
SIDE OF PROPERTY LINES AS INDICATED  
BY DASHED LINES EXCEPT AS OTHERWISE  
SHOWN.

FOR COMPLETE ENG DATA SEE  
ORIGINAL DEDICATION PLAT IN  
BOOK 79, PAGE 32 OF RECORDS.