

PART OF THE NE. 1/4, OF SECTION 23, T.6N., R.1E., S.L.B. & M.

160

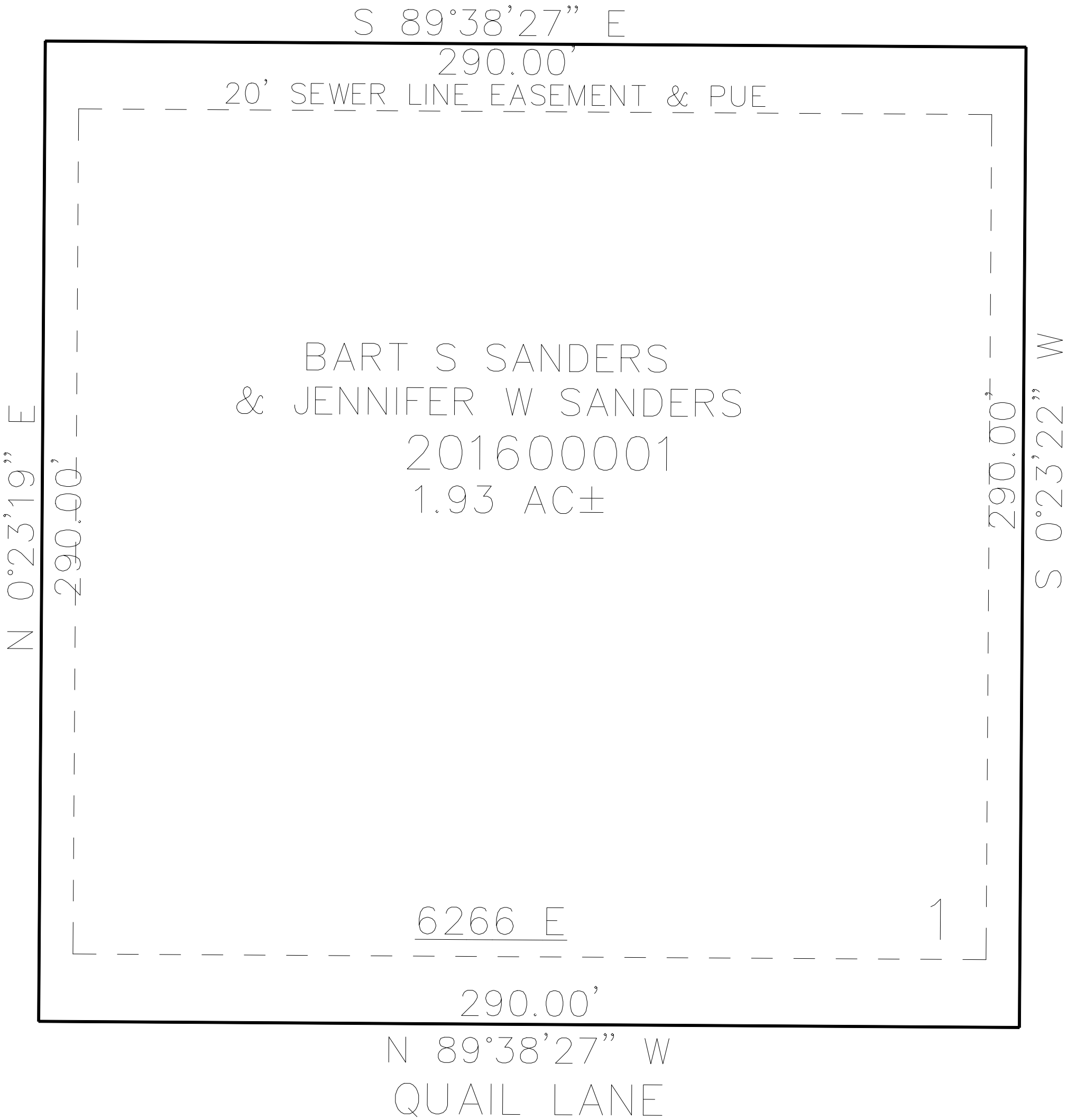
LANGELAND SUBDIVISION

IN WEBER COUNTY

TAXING UNIT: 35

SCALE 1" = 30'

SEE PAGE 35



10' UTILITY & DRAINAGE EASEMENTS EACH
SIDE OF PROPERTY LINES AS INDICATED
BY DASHED LINES EXCEPT AS OTHERWISE
SHOWN.

FOR COMPLETE ENG DATA SEE
ORIGINAL DEDICATION PLAT IN
BOOK 81, PAGE 17 OF RECORDS.