

PART OF THE W. 1/2, OF SECTION 14, T.6N., R.1E., S.L.B. & M.
MERRILL'S MOUNTAIN ESTATE PHASE 2

180

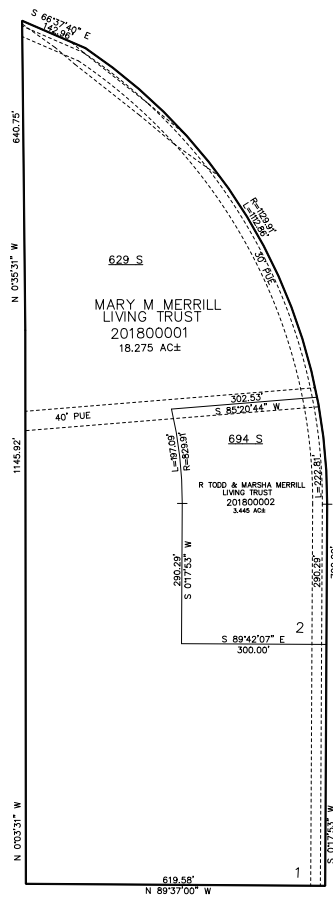
TAXING UNIT: 520

IN WEBER COUNTY
SCALE 1" = 200'

SEE PAGE 15

SEE PAGE 15

SEE PAGE 15



10' UTILITY & DRAINAGE EASEMENTS EACH
SIDE OF PROPERTY LINES AS INDICATED
BY DASHED LINES EXCEPT AS OTHERWISE
SHOWN.

SEE PAGE 15

FOR COMPLETE ENC DATA SEE
ORIGINAL DEDICATION PLAT IN
BOOK 89, PAGE 32 OF RECORDS.