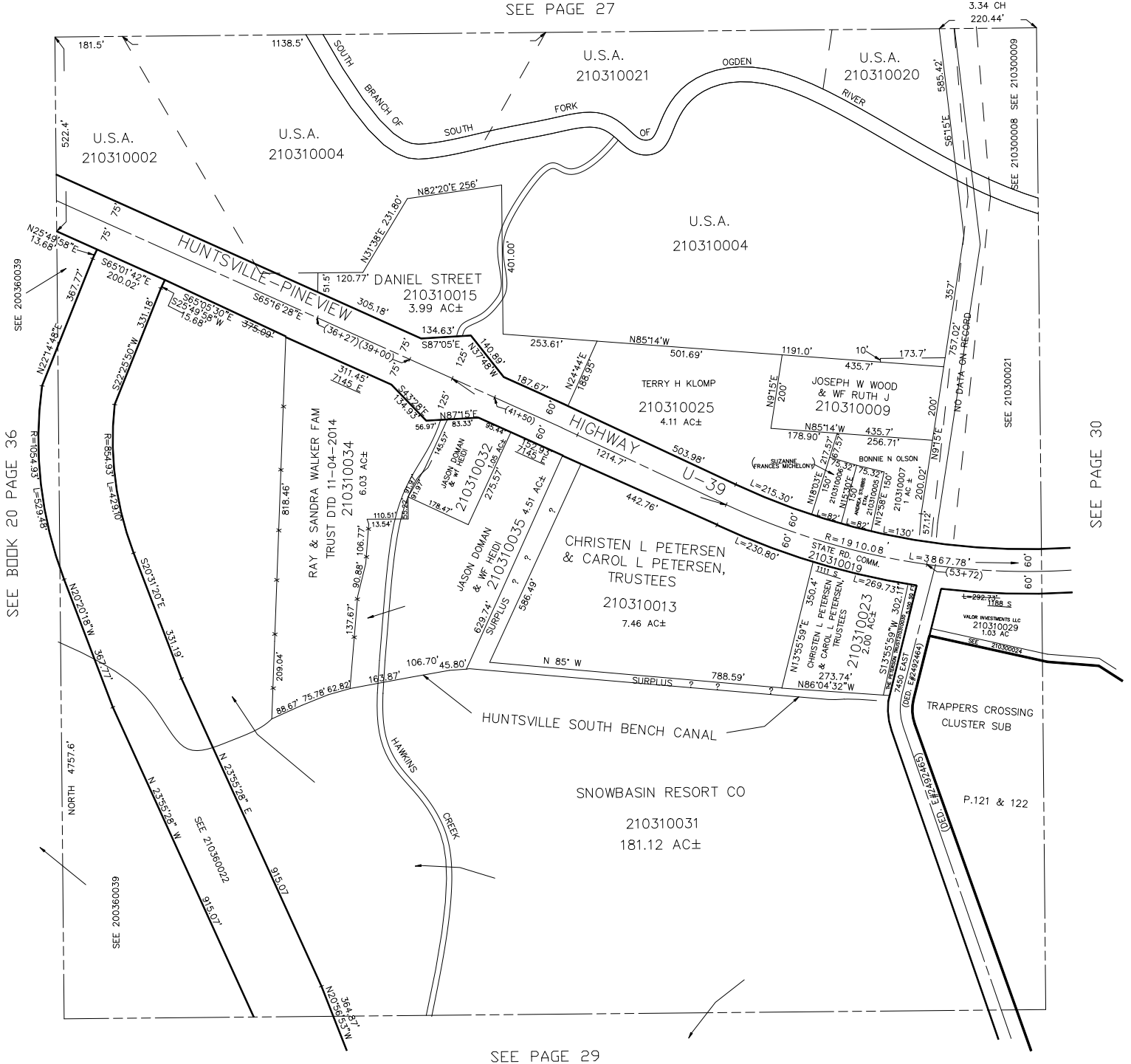


N.W. 1/4
SECTION 19, T.6N., R.2E., S.L.B. & M.
IN WEBER COUNTY
SCALE 1" = 200'

31

TAXING UNIT: 520

SEE PAGE 27



SEE PAGE 29

*ADDRESS AFFIDAVIT E#3119512, E#3119906

FOR TAX PURPOSES ONLY

SEE PAGE 30