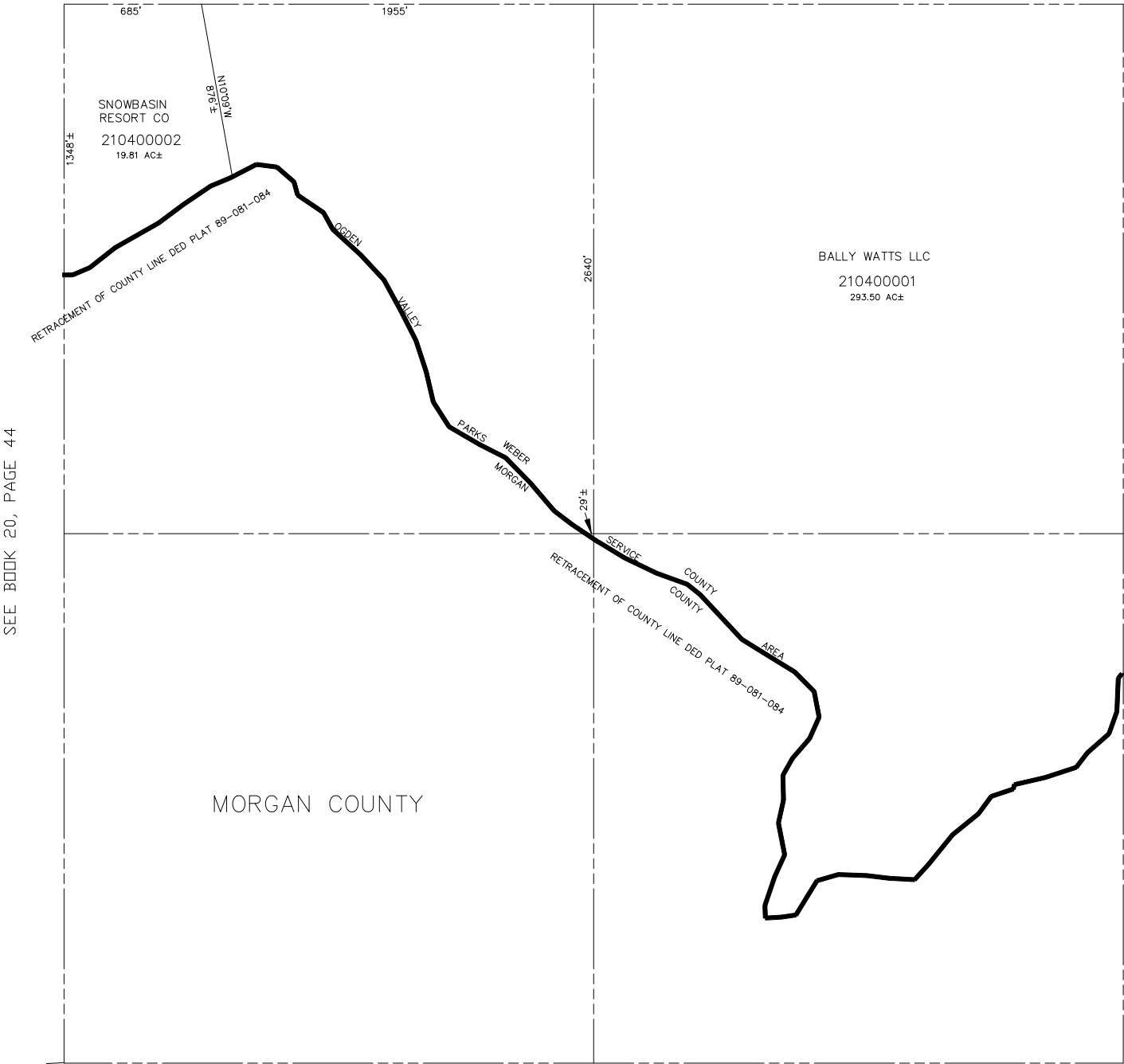


SECTION 31, T.6N., R.2E., S.L.B. & M.
IN WEBER COUNTY
SCALE 1" = 400'

TAXING UNIT: 520

SEE PAGE 39



SEE BOOK 20, PAGE 44

SEE PAGE 41

SEE BOOK 23, PAGE 6

NOTE: WEBER/MORGAN ASSESSMENT LINE
CHANGED TO COUNTY LINE - 1998

FOR TAX PURPOSES ONLY