

PART OF THE NE.1/4, SEC. 7, T.6N., R.2E., S.L.B.& M.

RY-KY ACRES SUBDIVISION

IN WEBER COUNTY

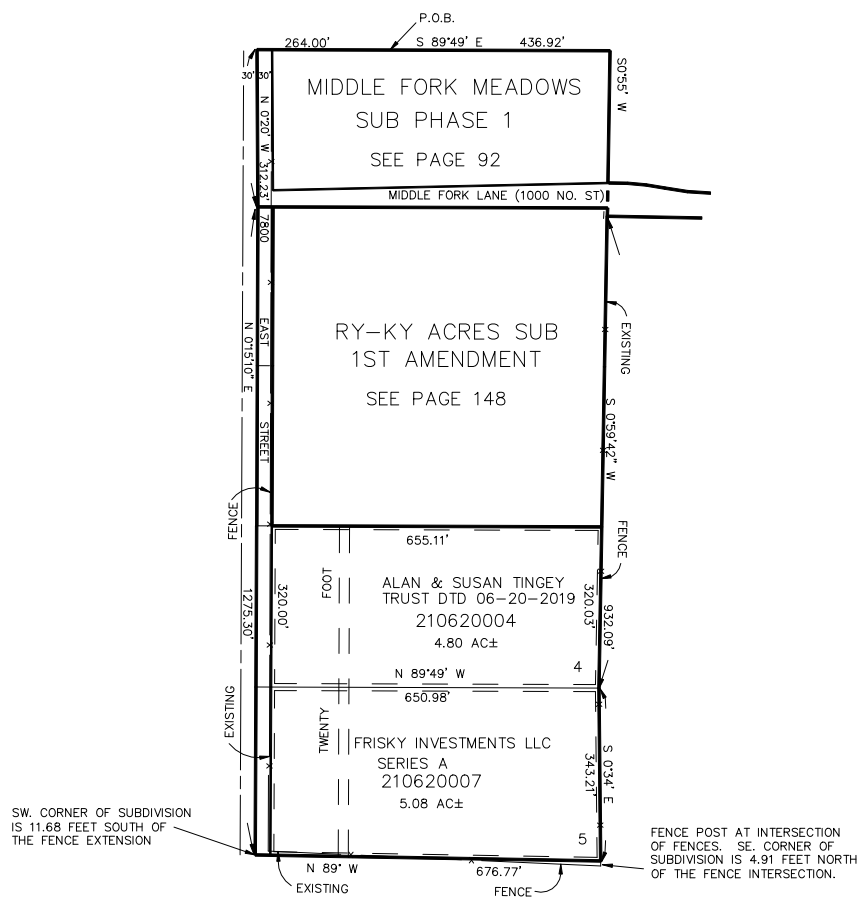
SCALE 1" = 200'

TAXING UNIT: 58

SEE PAGE 6

SEE PAGE 6

SEE PAGE 6



SEE PAGE 6

7' UTILITY & DRAINAGE EASEMENTS EACH SIDE OF PROPERTY LINES AS INDICATED BY DASHED LINES EXCEPT AS OTHERWISE SHOWN.

FOR COMPLETE ENG DATA SEE ORIGINAL DEDICATION PLAT IN BOOK 32, PAGE 87 OF RECORDS.

FOR TAX PURPOSES ONLY

KBR 12-90