

A PART OF SECTIONS 3,4,9, & 10, T.6N., R.2E., S.L.B. & M.
GREEN HILL COUNTRY ESTATES PHASE NO. 6

A CLUSTER TYPE SUBDIVISION

IN WEBER COUNTY

SCALE 1" = 100'

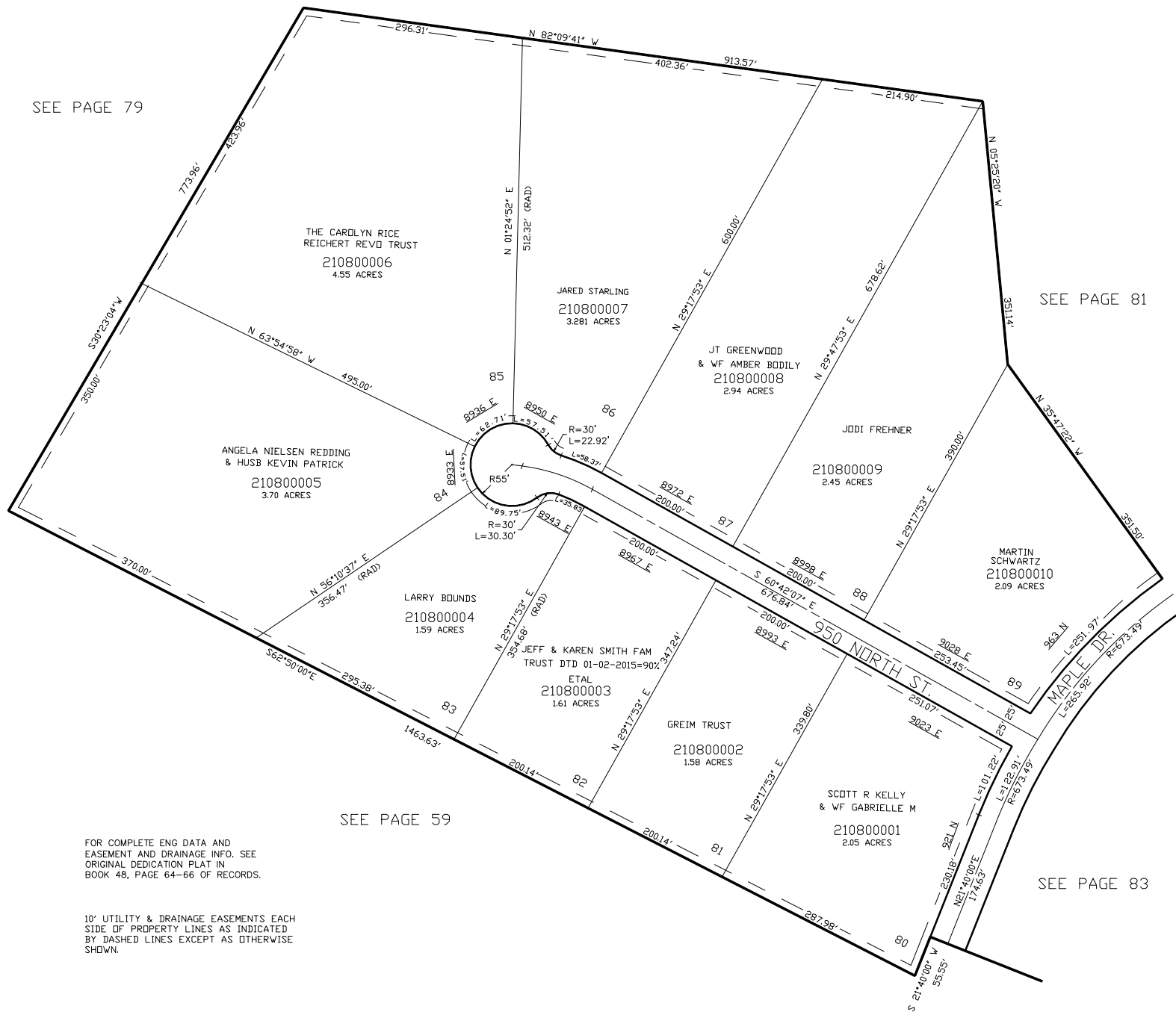
TAXING UNIT: 231

FOR NON-BUILDABLE AREAS,
 SLIDE AREAS, DRAINAGE EASEMENT,
 AND EXISTING DRAINAGE SWALE.
 SEE DEDICATION PLAT.

SEE PAGE 79

SEE PAGE 79

SEE PAGE 81



FOR COMPLETE ENG DATA AND
 EASEMENT AND DRAINAGE INFO. SEE
 ORIGINAL DEDICATION PLAT IN
 BOOK 48, PAGE 64-66 OF RECORDS.

10' UTILITY & DRAINAGE EASEMENTS EACH
 SIDE OF PROPERTY LINES AS INDICATED
 BY DASHED LINES EXCEPT AS OTHERWISE
 SHOWN.

FOR TAX PURPOSES ONLY

VLG 12-98