

A PART OF SECTIONS 3,4,9, & 10, T.6N., R.2E., S.L.B. & M.  
GREEN HILL COUNTRY ESTATES PHASE NO. 6

TAXING UNIT: 231

A CLUSTER TYPE SUBDIVISION  
IN WEBER COUNTY  
SCALE 1" = 100'

FOR NON-BUILDABLE AREAS,  
SLIDE AREAS, DRAINAGE EASEMENT  
AND EXISTING DRAINAGE SWALE.  
SEE DEDICATION PLAT.

SEE PAGE 81

SEE PAGE 84

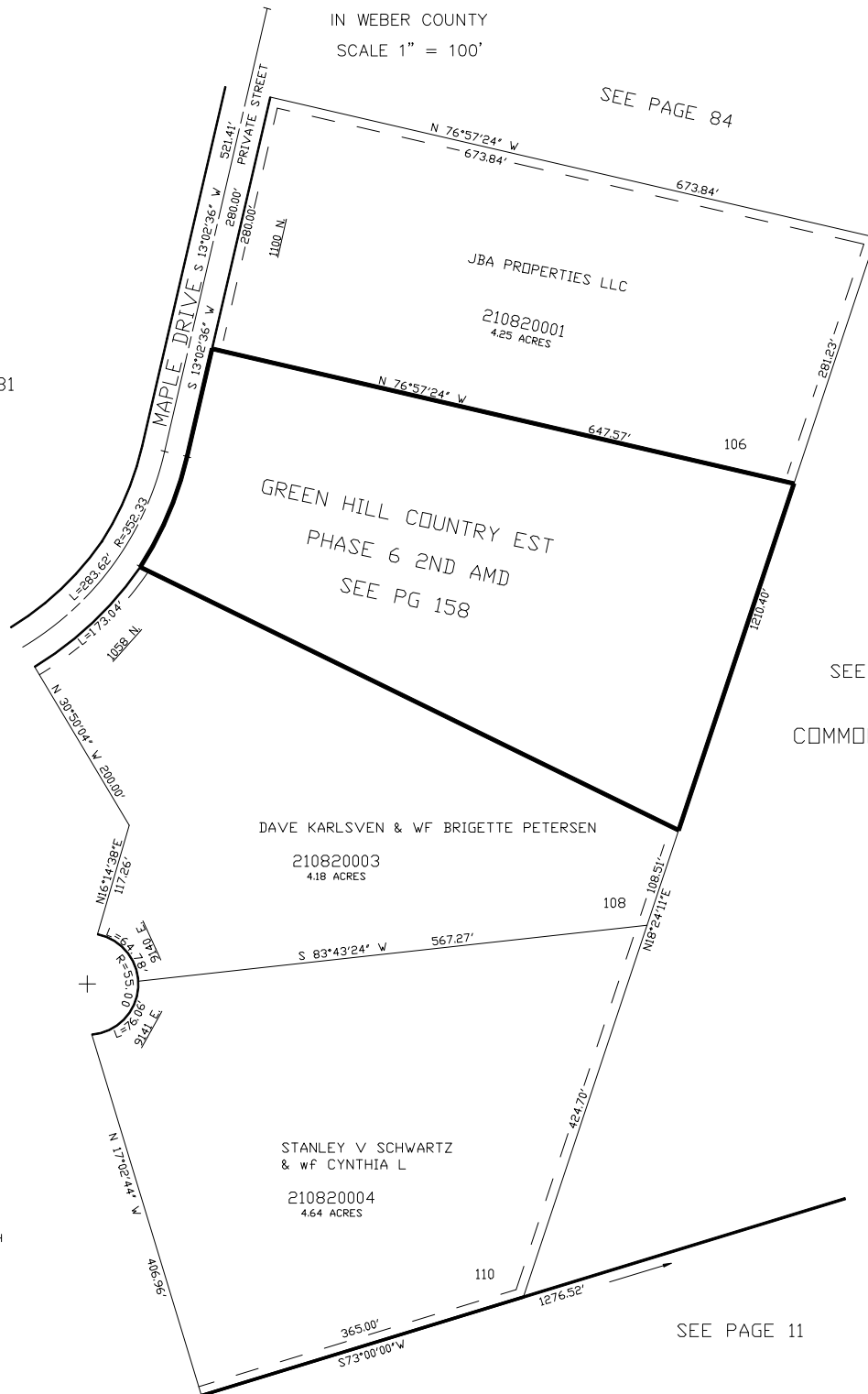
SEE PAGE 79

COMMON AREA "K"

SEE PAGE 83

SEE PAGE 11

\*FOR TAX PURPOSES ONLY\*



FOR COMPLETE ENG DATA AND  
DRAINAGE EASEMENT INFO. SEE  
ORIGINAL DEDICATION PLAT IN  
BOOK 48, PAGE 64-66 OF RECORDS.

10' UTILITY & DRAINAGE EASEMENTS EACH  
SIDE OF PROPERTY LINES AS INDICATED  
BY DASHED LINES EXCEPT AS OTHERWISE  
SHOWN.