

A PART OF SECTIONS 3,4,9, & 10, T.6N., R.2E., S.L.B. & M. GREEN HILL COUNTRY ESTATES PHASE NO. 6

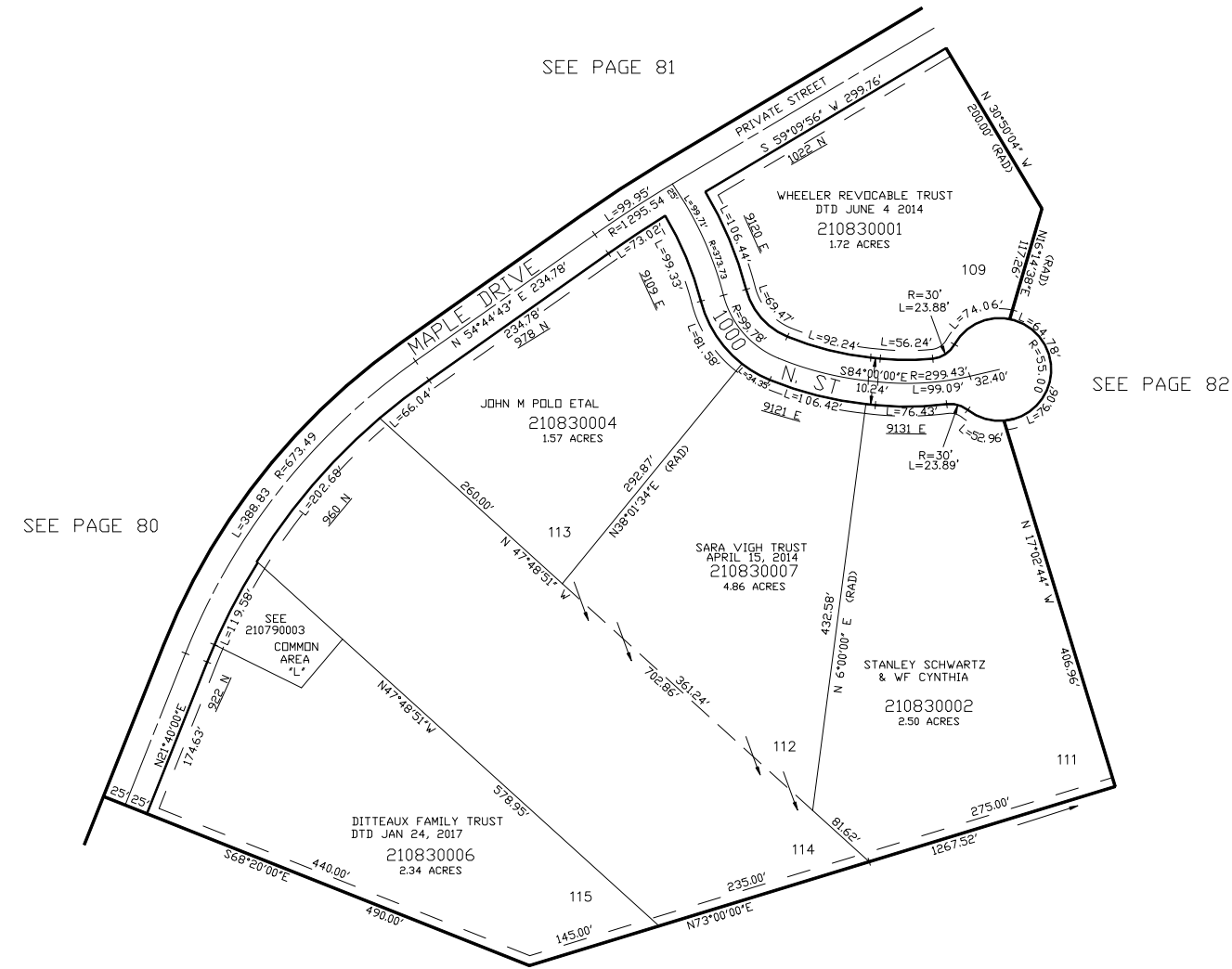
A CLUSTER TYPE SUBDIVISION

IN WEBER COUNTY

SCALE 1" = 100'

TAXING UNIT: 231

FOR NON-BUILDABLE AREAS,
SLIDE AREAS, DRAINAGE EASEMENT,
AND EXISTING DRAINAGE SWALE.
SEE DEDICATION PLAT.



SEE PAGE 59

SEE PAGE 11

10' UTILITY & DRAINAGE EASEMENTS EACH
SIDE OF PROPERTY LINES AS INDICATED
BY DASHED LINES EXCEPT AS OTHERWISE
SHOWN.

FOR COMPLETE ENG DATA SEE
ORIGINAL DEDICATION PLAT IN
BOOK 48, PAGE 64-66 OF RECORDS.

FOR TAX PURPOSES ONLY