

PART OF THE S.W.1/4, OF SECTION 9, T.6N., R.2E., S.L.B. & M.

91

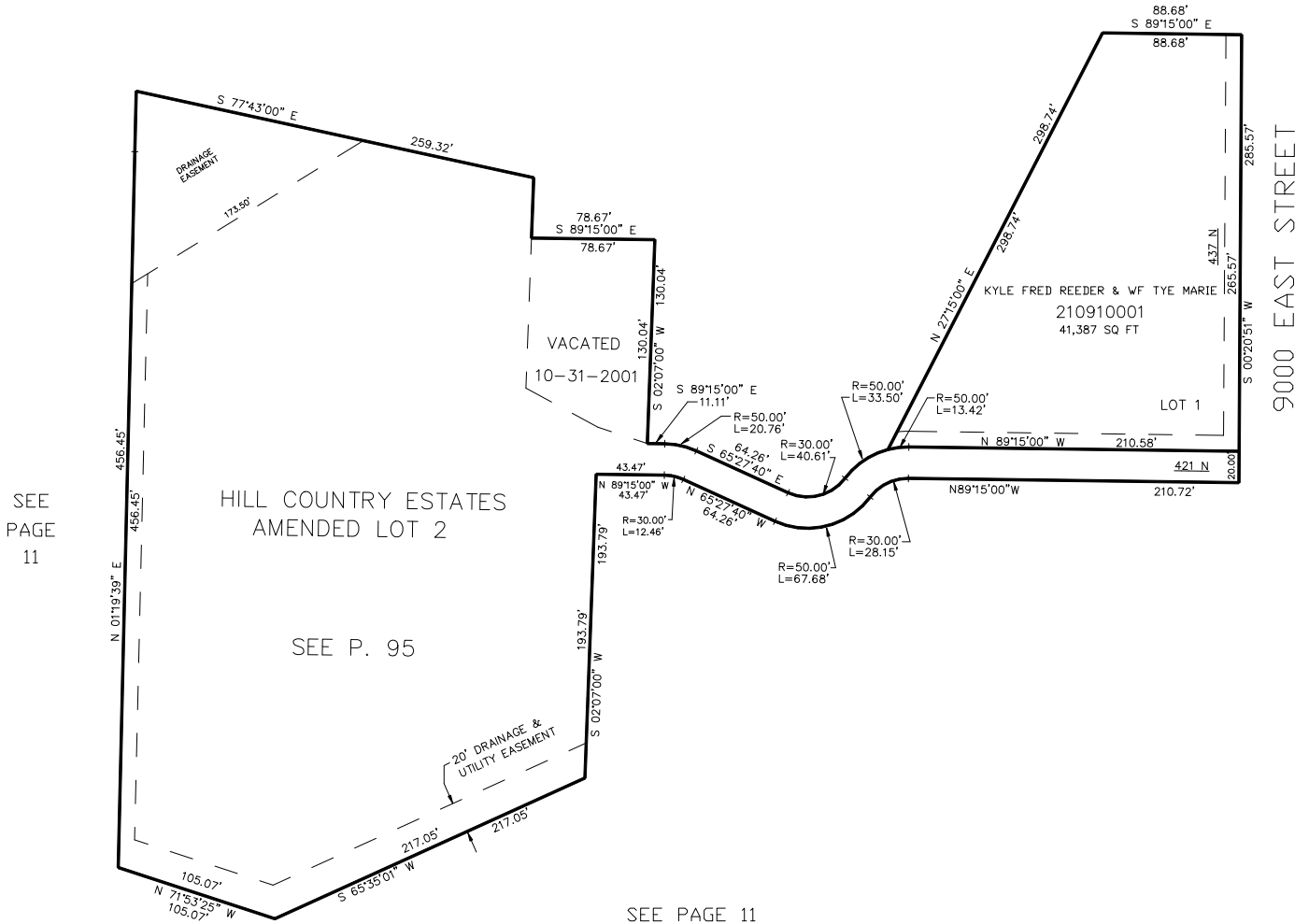
# HILL COUNTRY ESTATES

IN WEBER COUNTY

TAXING UNIT: 231

SCALE 1" = 60'

SEE PAGE 11



SEE  
PAGE  
11

FOR COMPLETE ENG DATA SEE  
ORIGINAL DEDICATION PLAT IN  
BOOK 52, PAGE 15 OF RECORDS.

10' UTILITY & DRAINAGE EASEMENTS EACH  
SIDE OF PROPERTY LINES AS INDICATED  
BY DASHED LINES EXCEPT AS OTHERWISE  
SHOWN.

\*FOR TAX PURPOSES ONLY\*

CRR 05-00