

PART OF THE NE.1/4, OF SECTION 17 AND PART OF THE NW.1/4, OF SECTION 16, T.6N., R.2E., S.L.B. & M.

108

# MOUNTAIN VIEW ACRES SUBDIVISION

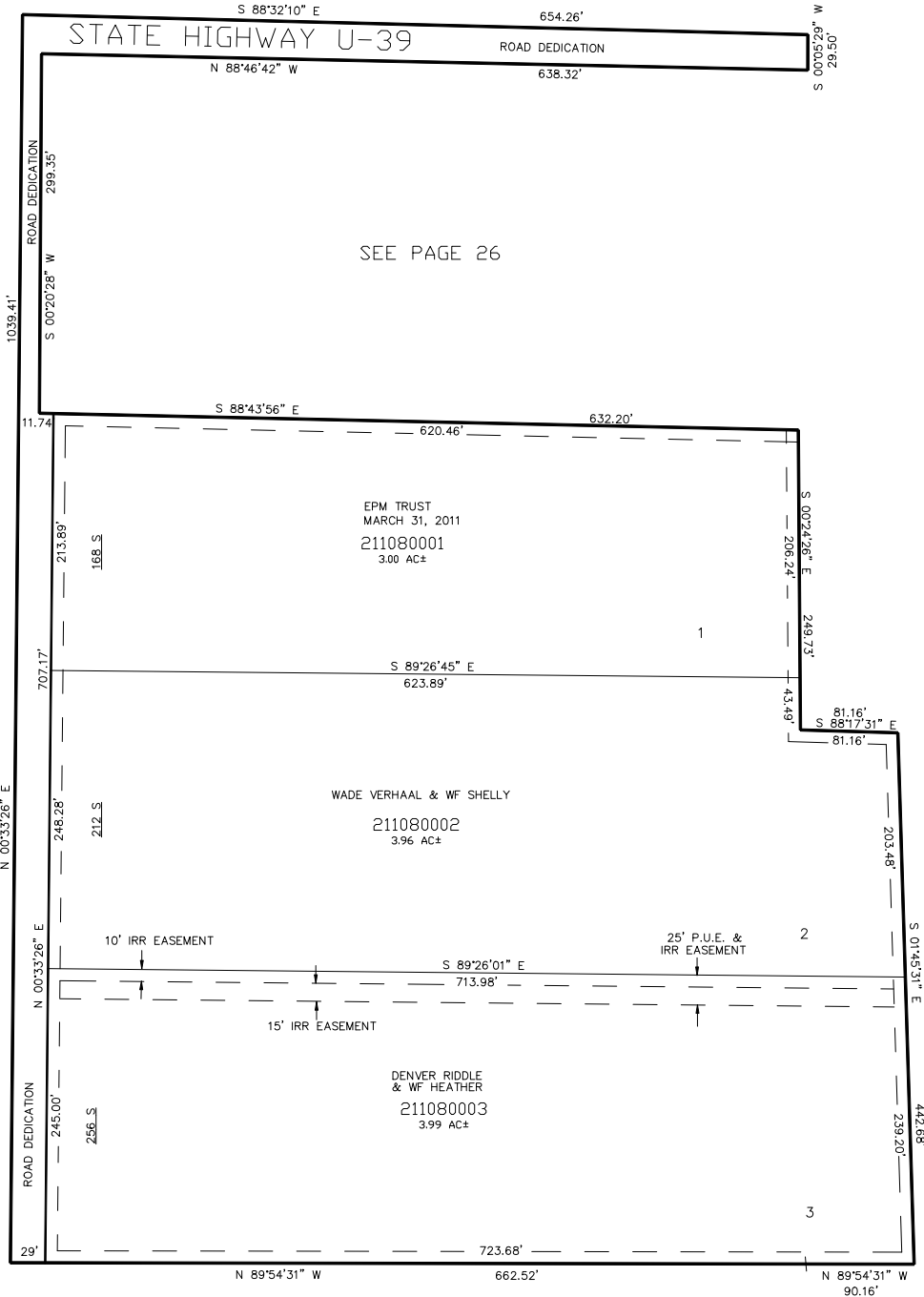
IN WEBER COUNTY

TAXING UNIT: 520

SCALE 1" = 80'

SEE PAGE 67

SEE PAGE 25



10' UTILITY & DRAINAGE EASEMENTS EACH  
SIDE OF PROPERTY LINES AS INDICATED  
BY DASHED LINES EXCEPT AS OTHERWISE  
SHOWN.

SEE PAGE 26

FOR COMPLETE ENG DATA SEE  
ORIGINAL DEDICATION PLAT IN  
BOOK 63, PAGE 14 OF RECORDS.

\*FOR TAX PURPOSES ONLY\*

BK 01-06