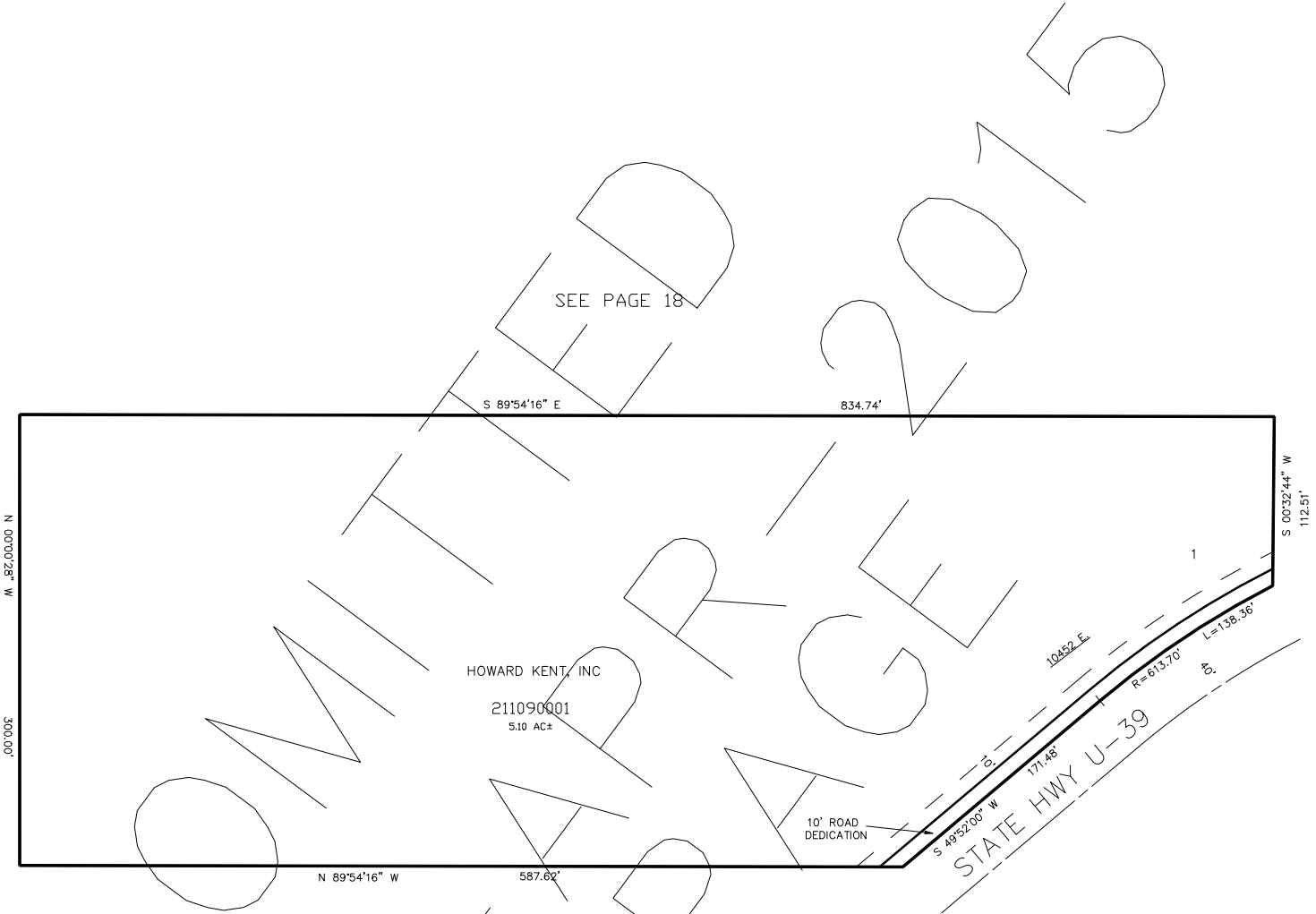


PART OF THE NW 1/4 OF SECTION 14, T.6N., R.2E., S.L.B. & M.
BRIAN & BARBARA EDWARDS SUB 1ST AMENDMENT

IN WEBER COUNTY

TAXING UNIT: 318

SCALE 1" = 60'



SEE PAGE 18

SEE PAGE 18

10' UTILITY & DRAINAGE EASEMENTS EACH
SIDE OF PROPERTY LINES AS INDICATED
BY DASHED LINES EXCEPT AS OTHERWISE
SHOWN.

FOR COMPLETE ENG DATA SEE
ORIGINAL DEDICATION PLAT IN
BOOK 63, PAGE 44 OF RECORDS.