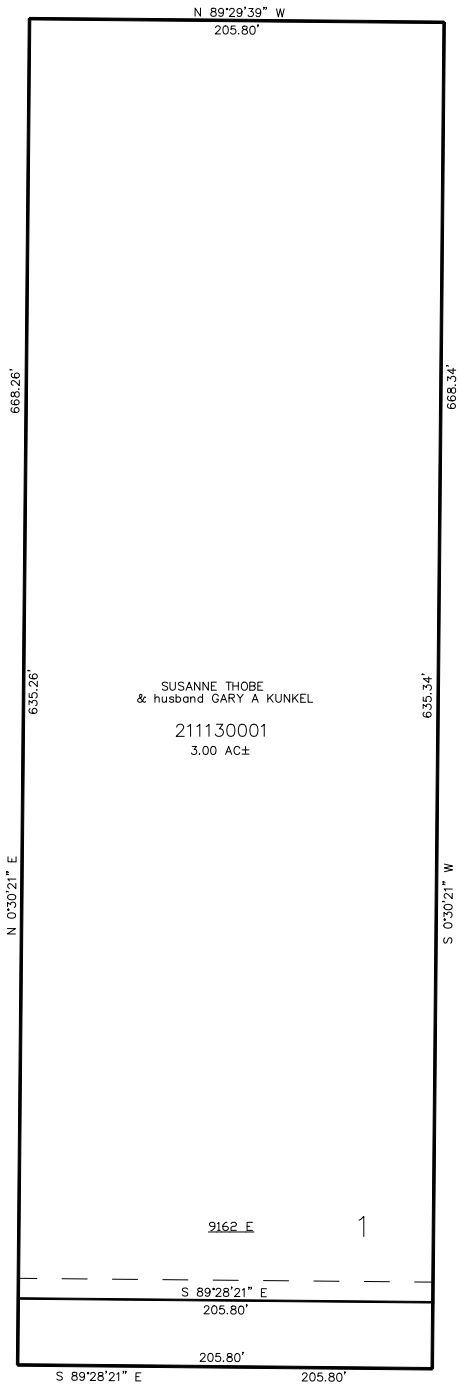


PART OF THE N.1/2, OF SECTION 21, T.6N., R.2 E., S.L.B. & M.
BENDED KNEE FARMS
IN WEBER COUNTY

TAXING UNIT: 520
SCALE 1" = 50'

SEE PAGE 35

SEE PAGE 87



10' UTILITY & DRAINAGE EASEMENTS EACH
SIDE OF PROPERTY LINES AS INDICATED
BY DASHED LINES EXCEPT AS OTHERWISE
SHOWN.

FOR COMPLETE ENG DATA SEE
ORIGINAL DEDICATION PLAT IN
BOOK 66, PAGE 40 OF RECORDS.

(SEE ORDINANCE 2010-6 E#2468671)

1300 SOUTH

SEE PAGE 35

FOR TAX PURPOSES ONLY