

PART OF THE SW.1/4, OF SECTION 17, T.6N., R.2E., S.L.B. & M.
REX MUMFORD SUBDIVISION 1ST AMENDMENT LOTS 1 & 2

124

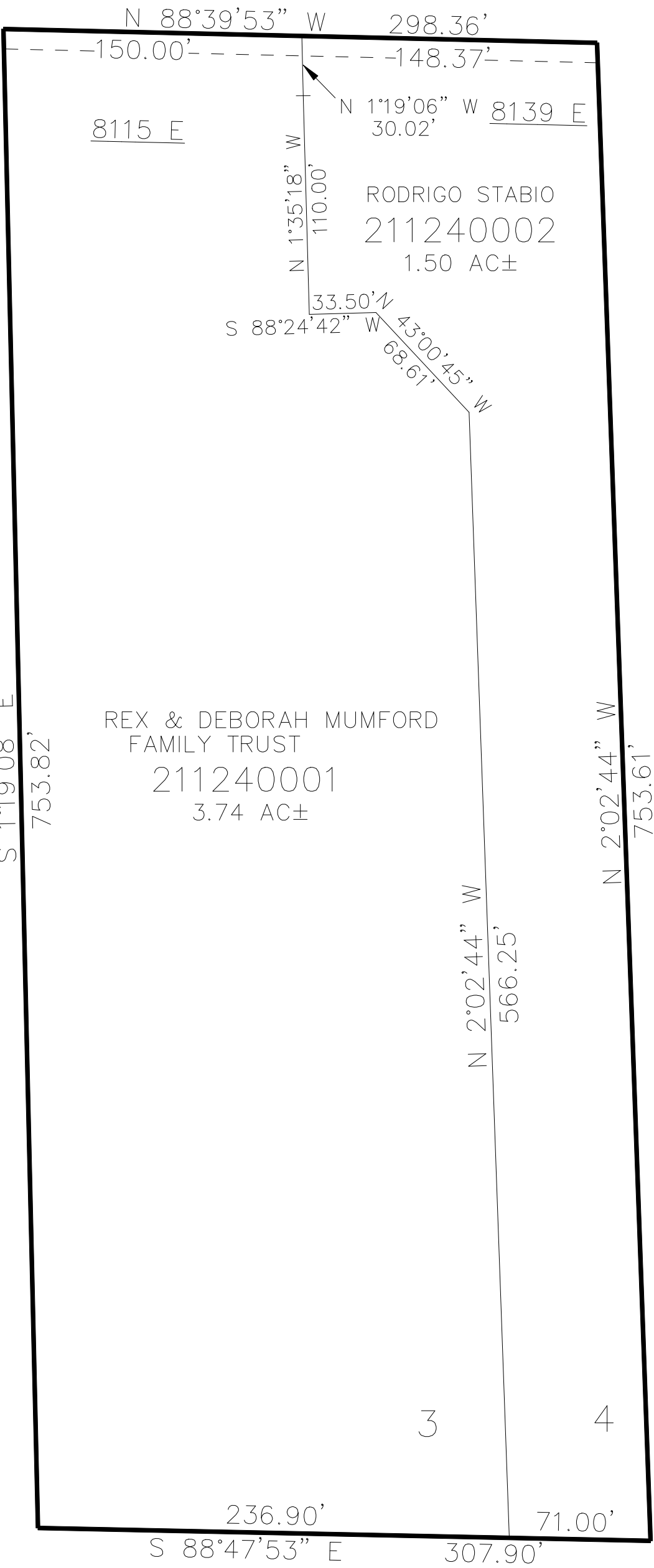
TAXING UNIT: 318

IN WEBER COUNTY
SCALE 1" = 60'

500 SOUTH STREET

SEE PAGE 26-1

SEE PAGE 26-1



10' UTILITY & DRAINAGE EASEMENTS EACH
SIDE OF PROPERTY LINES AS INDICATED
BY DASHED LINES EXCEPT AS OTHERWISE
SHOWN.

FOR COMPLETE ENG DATA SEE
ORIGINAL DEDICATION PLAT IN
BOOK 73, PAGE 96 OF RECORDS.