

PART OF THE SE 1/4, OF SECTION 4, AND THE E 1/2 OF SECTION 3, T.6N., R.2E., S.L.B. & M.

139

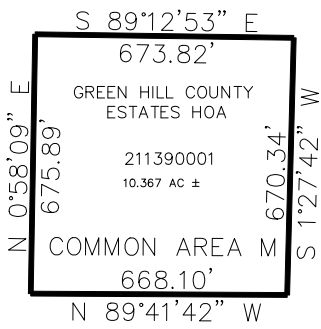
GREEN HILL COUNTRY ESTATES PHASE NO. 8

IN WEBER COUNTY

TAXING UNIT: 231

SCALE 1" = 500'

SEE PAGE 1



10' UTILITY & DRAINAGE EASEMENTS EACH
SIDE OF PROPERTY LINES AS INDICATED
BY DASHED LINES EXCEPT AS OTHERWISE
SHOWN.

FOR COMPLETE ENG DATA SEE
ORIGINAL DEDICATION PLAT IN
BOOK 78, PAGE 84 OF RECORDS.