

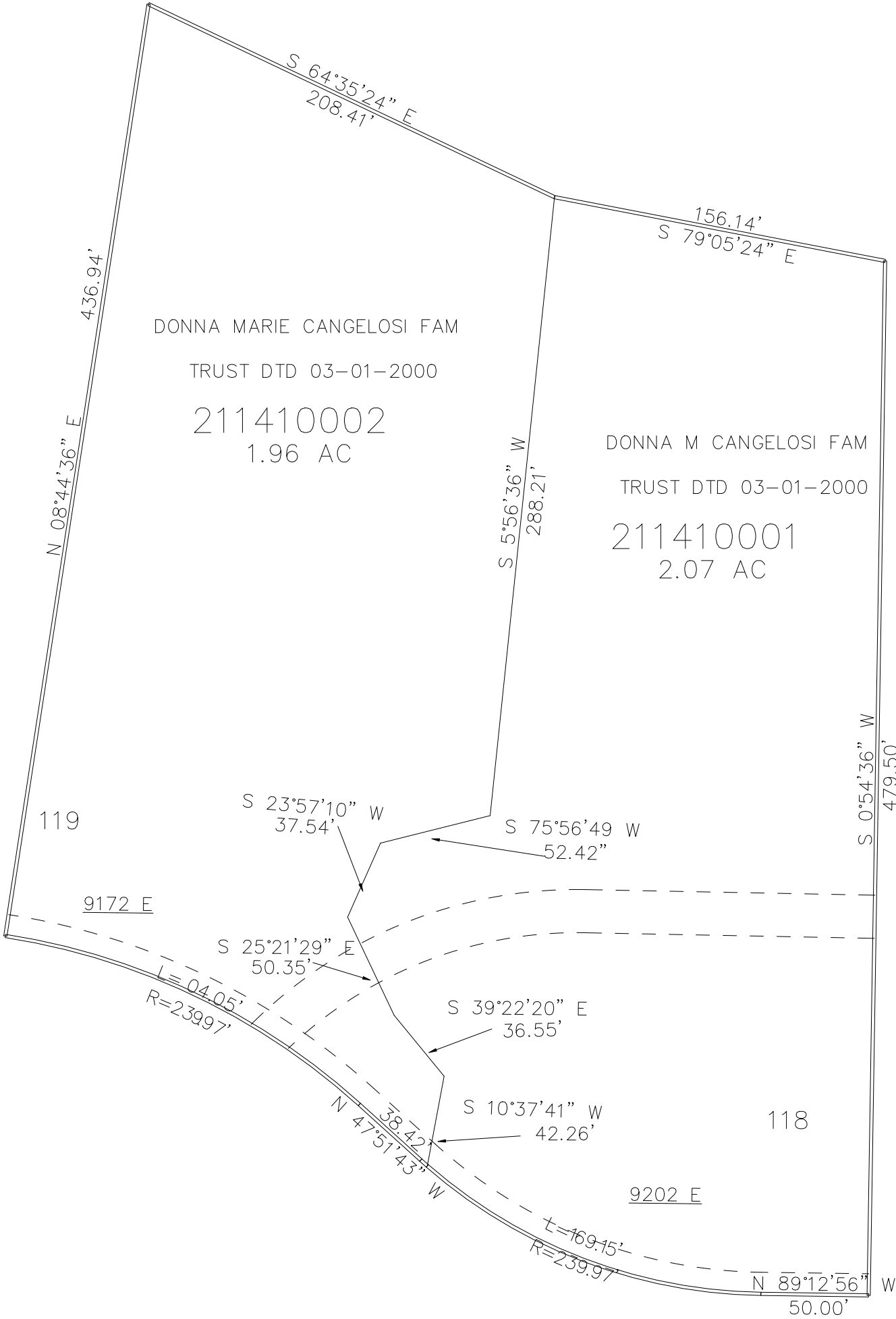
PART OF THE E 1/2, OF SECTION 9, T.6N., R.2E., S.L.B. & M.
GREEN HILL COUNTRY EST PH 1 AMENDMENT NO 1

IN WEBER COUNTY
SCALE 1" = 60'

TAXING UNIT: 231

SEE PAGE 54

SEE PAGE 53



SEE PAGE 52

10' UTILITY & DRAINAGE EASEMENTS EACH
SIDE OF PROPERTY LINES AS INDICATED
BY DASHED LINES EXCEPT AS OTHERWISE
SHOWN.

FOR COMPLETE ENG DATA SEE
ORIGINAL DEDICATION PLAT IN
BOOK 79, PAGE 08 OF RECORDS.