

PART OF THE W 1/4, OF SECTION 6, T.6N., R.2E., S.L.B. & M.
MIDDLE FORK RANCHES FIRST AMD

142

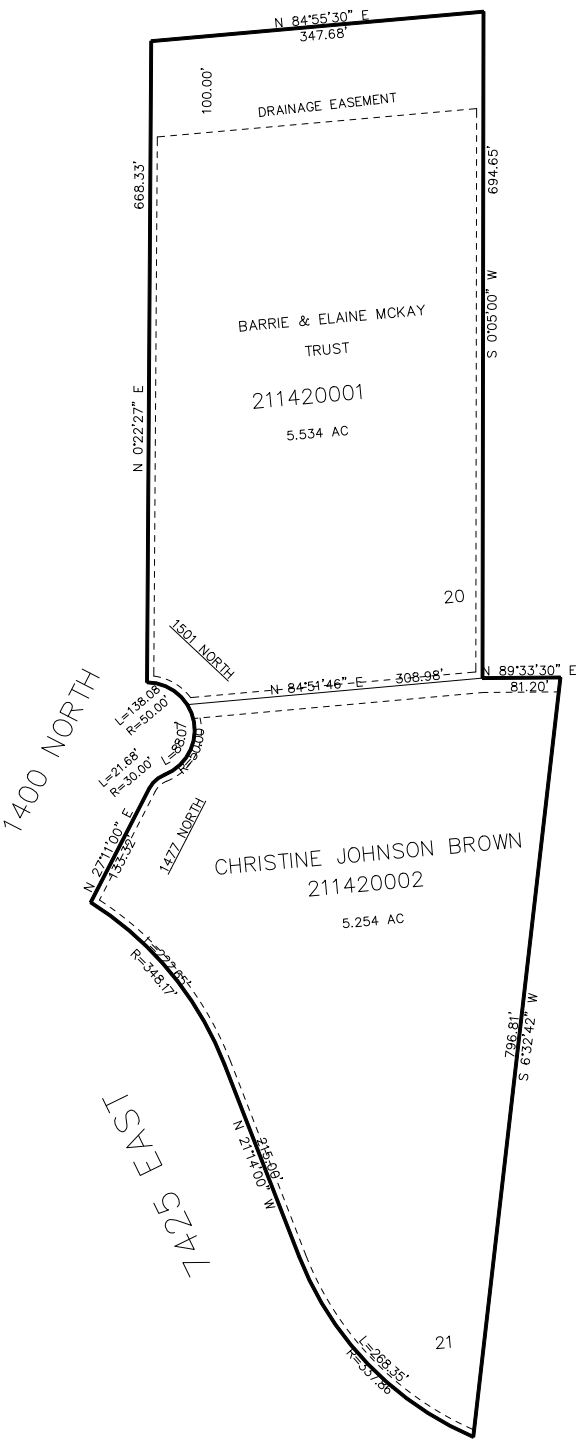
TAXING UNIT: 520

IN WEBER COUNTY
SCALE 1" = 200'

SEE PAGE 48

SEE PAGE 48

SEE PAGE 48



SEE PAGE 48

7' UTILITY & DRAINAGE EASEMENTS EACH
SIDE OF PROPERTY LINES AS INDICATED
BY DASHED LINES EXCEPT AS OTHERWISE
SHOWN.

FOR COMPLETE ENG DATA SEE
ORIGINAL DEDICATION PLAT IN
BOOK 79, PAGE 12 OF RECORDS.