

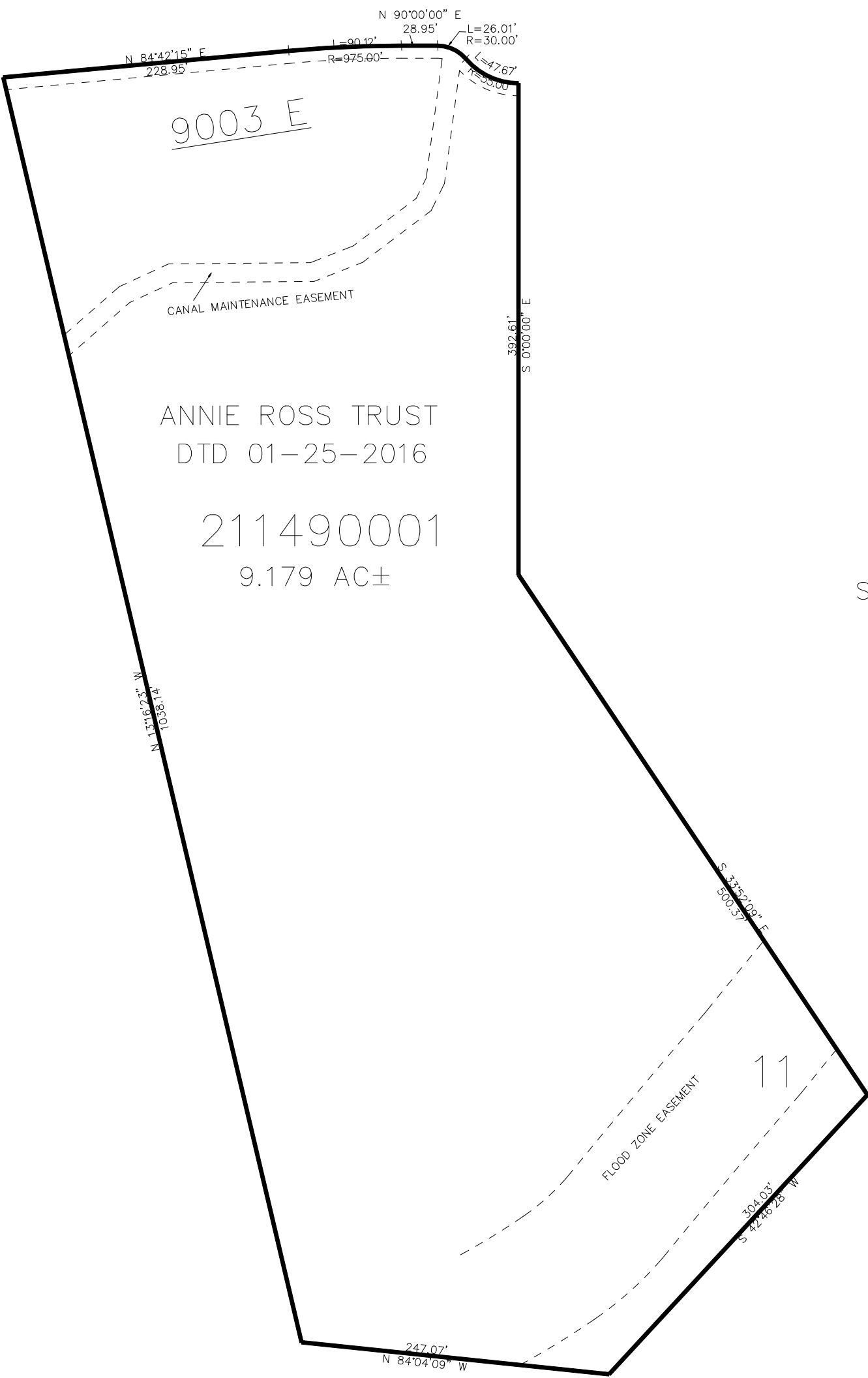
PART OF THE NW. 1/4, OF SECTION 21, T.6N., R.2E., S.L.B. & M.  
RIVER RANCH 1ST AMENDMENT

149

TAXING UNIT: 520

IN WEBER COUNTY  
SCALE 1" = 100'

EAGLE WAY



10' UTILITY & DRAINAGE EASEMENTS EACH  
SIDE OF PROPERTY LINES AS INDICATED  
BY DASHED LINES EXCEPT AS OTHERWISE  
SHOWN.

FOR COMPLETE ENG DATA SEE  
ORIGINAL DEDICATION PLAT IN  
BOOK 82, PAGE 27 OF RECORDS.