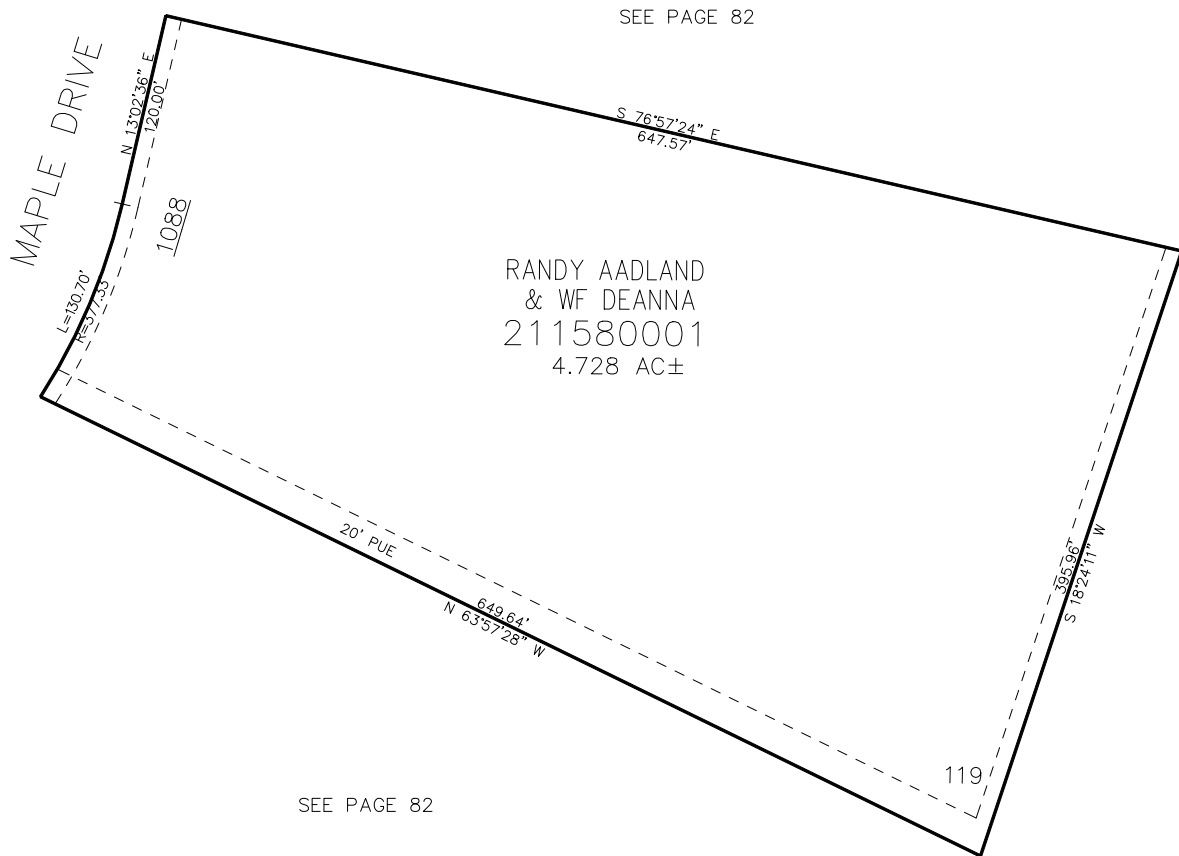


PART OF THE NE. 1/4, OF SECTION 9, T.6N., R.2E., S.L.B. & M.  
**GREEN HILL COUNTRY ESATES PHASE NO. 6 2ND AMENDMENT**

IN WEBER COUNTY

TAXING UNIT: 231

SCALE 1" = 60'



10' UTILITY & DRAINAGE EASEMENTS EACH  
 SIDE OF PROPERTY LINES AS INDICATED  
 BY DASHED LINES EXCEPT AS OTHERWISE  
 SHOWN.

FOR COMPLETE ENC DATA SEE  
 ORIGINAL DEDICATION PLAT IN  
 BOOK 87, PAGE 80 OF RECORDS.