

PART OF THE NE.1/4, OF SECTION 28, T.6N., R.2E., S.L.B. & M.

160

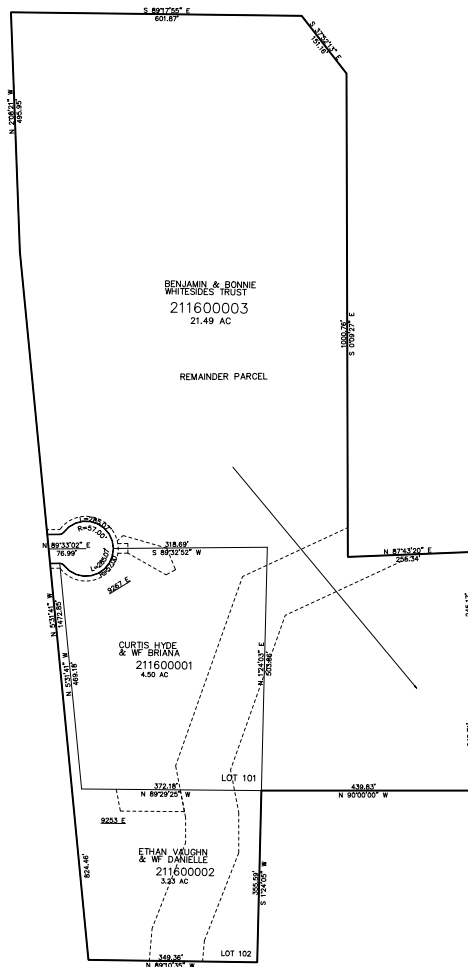
# ARROWHEAD MEADOW PH1

IN WEBER COUNTY

TAXING UNIT: 520

SCALE 1" = 200'

SEE PAGE 37



SEE PAGE 37

SEE PAGE 37

SEE PAGE 37

10' UTILITY & DRAINAGE EASEMENTS EACH  
SIDE OF PROPERTY LINES AS INDICATED  
BY DASHED LINES EXCEPT AS OTHERWISE  
SHOWN.

FOR COMPLETE ENG DATA SEE  
ORIGINAL DEDICATION PLAT IN  
BOOK 88 PAGE 31 OF RECORDS.