

PART OF THE SE.1/4, OF SECTION 9, T.6N., R.2E., S.L.B. & M.
GREEN HILL COUNTRY ESTATES PH No 1 2ND AMENDMENT

IN WEBER COUNTY
 SCALE 1" = 50'

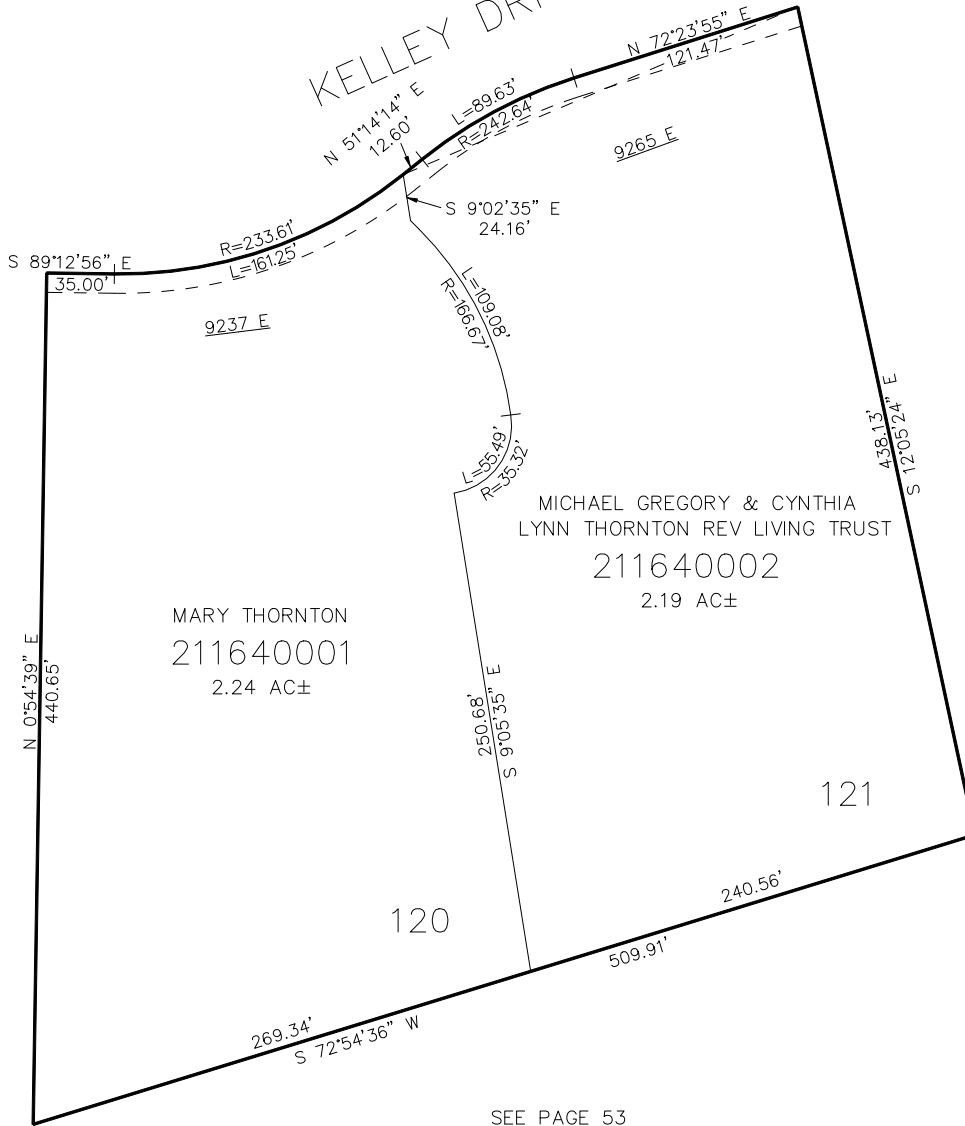
TAXING UNIT: 231

SEE PAGE 53

KELLEY DRIVE

SEE PAGE 53

SEE PAGE 52



10' UTILITY & DRAINAGE EASEMENTS EACH
 SIDE OF PROPERTY LINES AS INDICATED
 BY DASHED LINES EXCEPT AS OTHERWISE
 SHOWN.

FOR COMPLETE ENC DATA SEE
 ORIGINAL DEDICATION PLAT IN
 BOOK 90, PAGE 54 OF RECORDS.