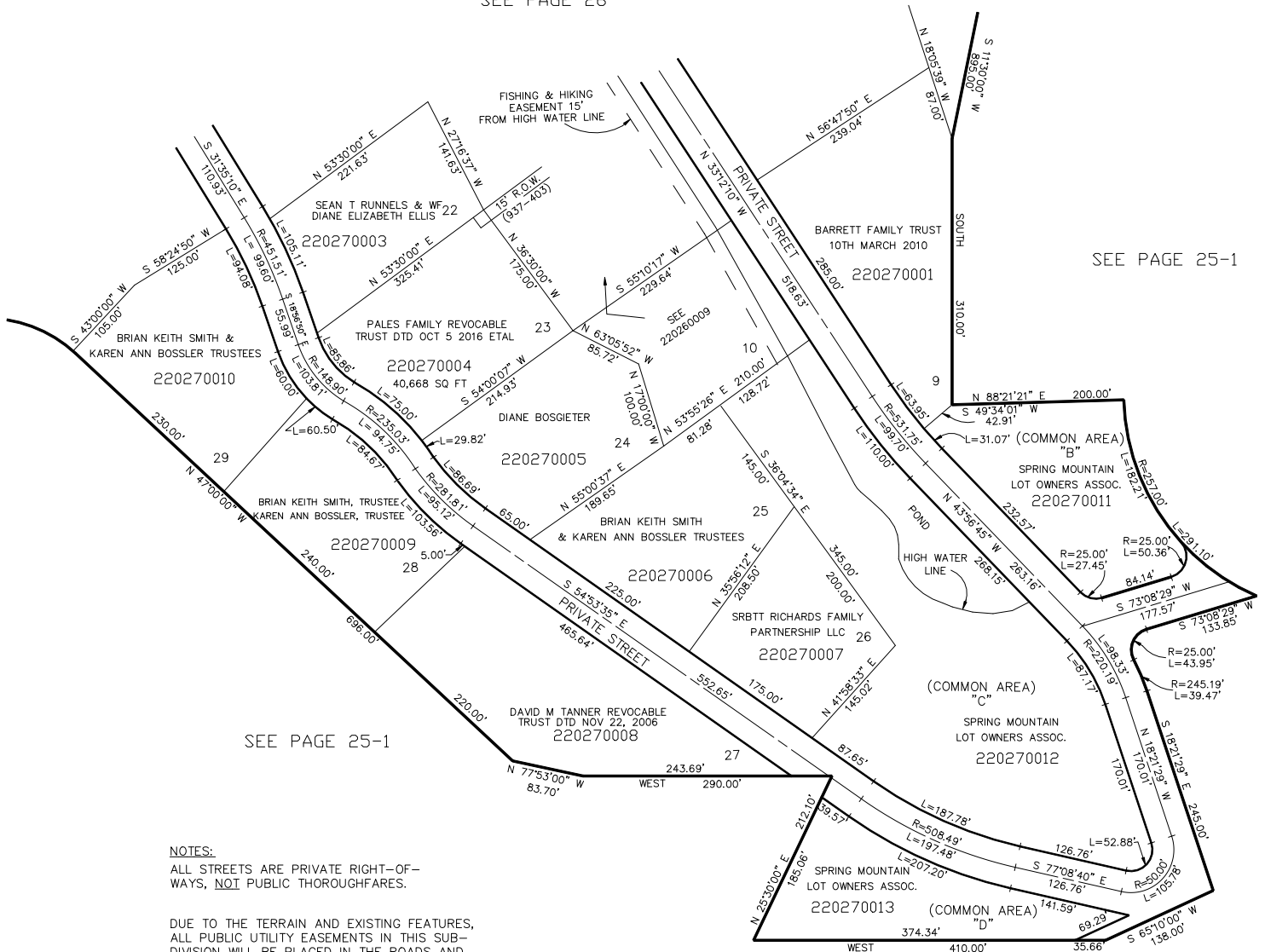


PART OF THE SOUTH 1/2, OF SEC. 19, T.7N., R.1E., S.L.B. & M.
SPRING MOUNTAIN RANCHETTES

LISTS 9, 10, 22-29, B, C, & D
 LIBERTY DISTRICT
 SCALE 1" = 100'

TAXING UNIT: 36

SEE PAGE 26



NOTES:
 ALL STREETS ARE PRIVATE RIGHT-OF-
 WAYS, NOT PUBLIC THOROUGHFARES.

DUE TO THE TERRAIN AND EXISTING FEATURES,
 ALL PUBLIC UTILITY EASEMENTS IN THIS SUB-
 DIVISION WILL BE PLACED IN THE ROADS AND
 THROUGH LOTS AT THE DISCRETION OF THE
 UTILITY COMPANIES WITH APPROVAL OF THE
 LOT OWNER ASSOCIATION.

WEBER COUNTY IS GRANTED AN OPEN SPACE
 EASEMENT ON AND OVER THE COMMON SPACE
 AREAS OF WHICH THE GENERAL PUBLIC DOES
 NOT HAVE RIGHT OF ACCESS.

FOR COMPLETE ENG DATA SEE
 ORIGINAL DEDICATION PLAT IN
 BOOK 15, PAGES 75 & 76 OF
 RECORDS.

FOR TAX PURPOSES ONLY