

PART OF SECTION 32, T.7N., R.1E., S.L.B. & M.

SILVER BELL ESTATES NO. 1

LOTS 14 - 21 & 45 - 51

IN WEBER COUNTY

SCALE 1" = 100'

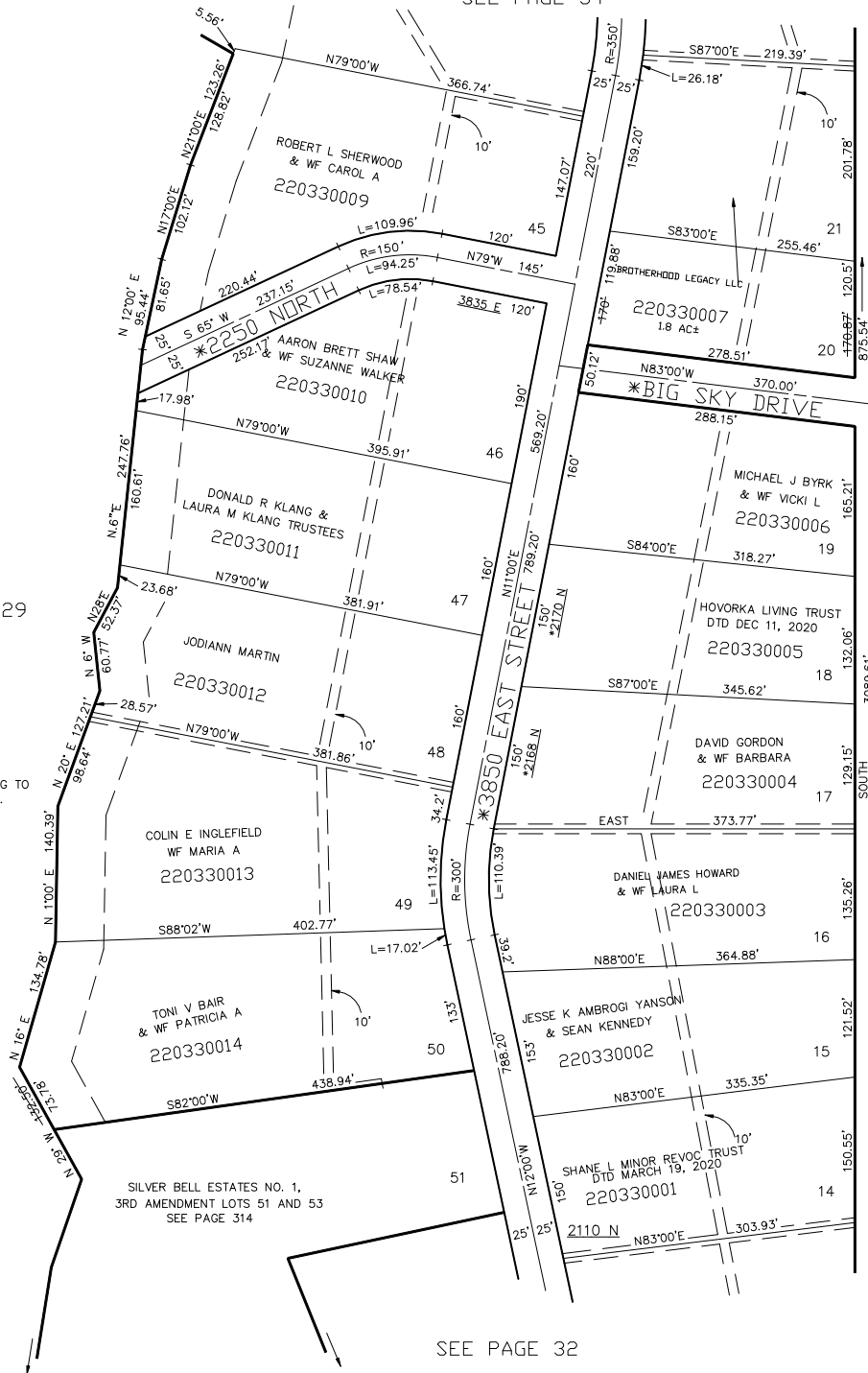
TAXING UNIT: 28

SEE PAGE 34

SEE PAGE 29

NOTE: STREET NUMBERS ACCORDING TO
COUNTY SURVEYOR'S OFFICE.

NOTE: PROPERTY ADDRESS AFFIDAVIT
E#2788747 & 2970765



BIG SKY ESTATES NO. 1

SEE PAGE 41 & 42

SEE PAGE 32

FOR TAX PURPOSES ONLY

FOR COMPLETE ENG DATA SEE
ORIGINAL DEDICATION PLAT IN
BOOK 12, PAGE 89 & 90 OF RECORDS.

ALL UTILITY EASEMENTS ARE 10' IN WIDTH