

PART OF SECTION 32, T.7N., R.1E., S.L.B. & M.

# SILVER BELL ESTATES NO. 1

LOTS 28-40

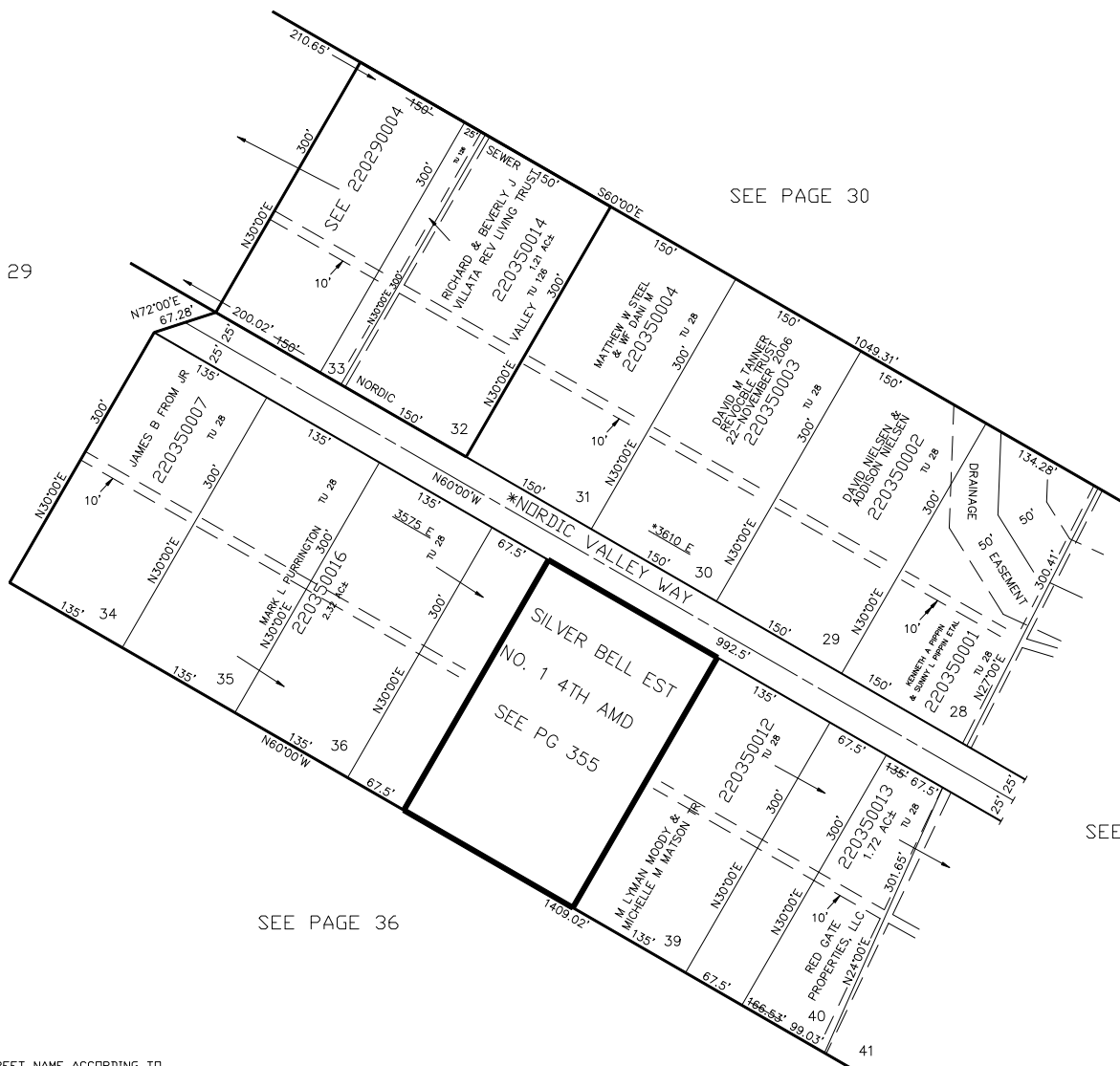
IN WEBER COUNTY

SCALE 1" = 100'

TAXING UNIT: 28, 126

SEE PAGE 30

SEE PAGE 29



SEE PAGE 34

SEE PAGE 36

\*NOTE: STREET NAME ACCORDING TO COUNTY SURVEYOR'S OFFICE.

FOR COMPLETE ENG DATA SEE ORIGINAL DEDICATION PLAT IN BOOK 12, PAGE 90 OF RECORDS.

ALL ROADS IN THIS SUBDIVISION ARE OWNED BY WEBER COUNTY SEE 22-032-0028

ALL UTILITY EASEMENTS ARE 10 FEET WIDE.  
THE DRAINAGE EASEMENT IS 100 FEET WIDE.

\*ADDRESS AFFIDAVIT E#2956741

\*FOR TAX PURPOSES ONLY\*