

PART OF THE S.W. 1/4 OF SEC. 27, T.7N., R.1E., S.L.B. & M.

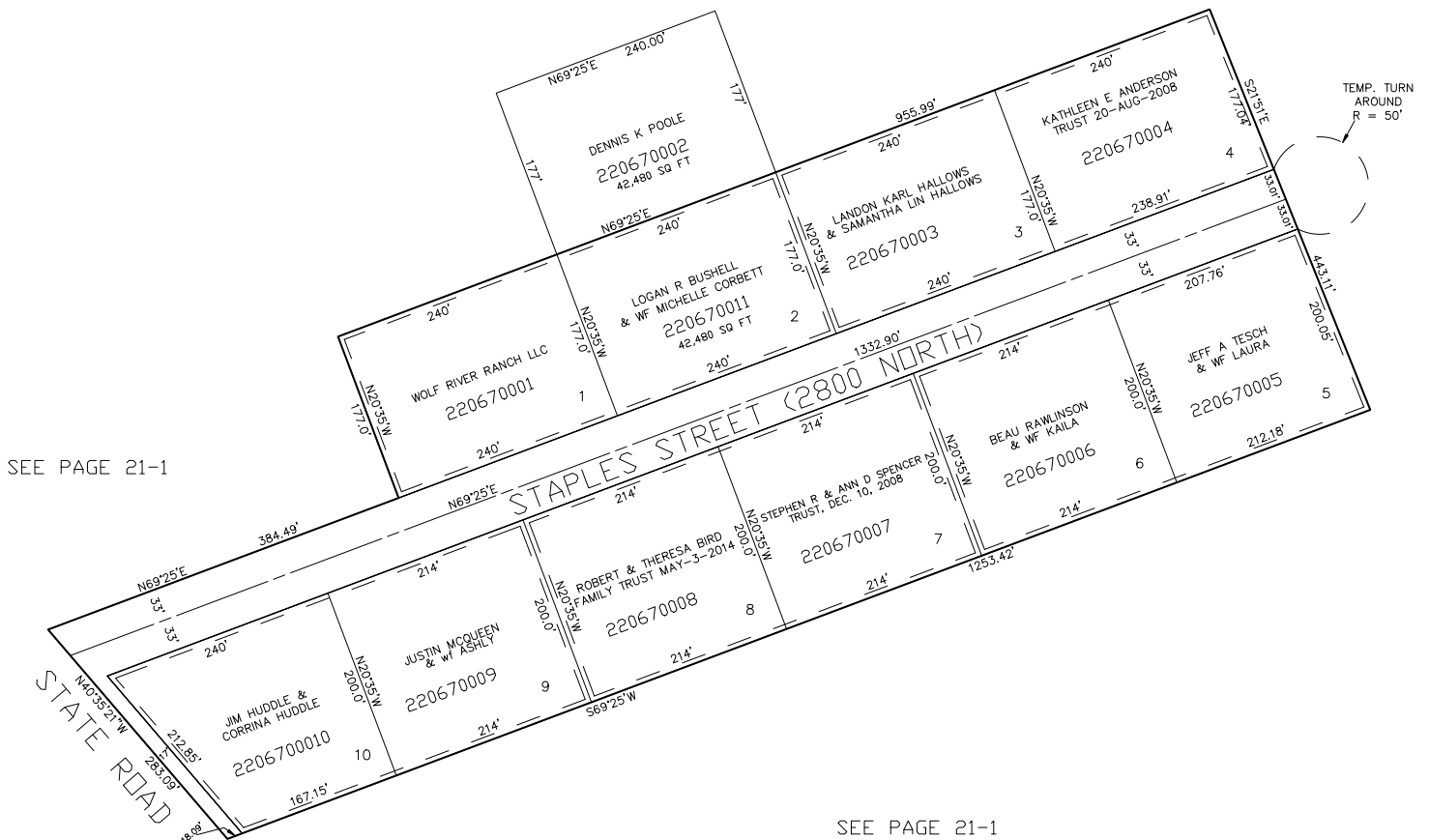
MOUNTAIN VIEW ESTATES

IN WEBER COUNTY

TAXING UNIT: 28

SCALE 1" = 100'

SEE PAGE 21-1



5' UTILITY & DRAINAGE EASEMENTS EACH SIDE OF PROPERTY LINES AS INDICATED BY DASHED LINES EXCEPT AS OTHERWISE SHOWN.

FOR COMPLETE ENG DATA SEE ORIGINAL DEDICATION PLAT IN BOOK 17, PAGE 92 OF RECORDS.