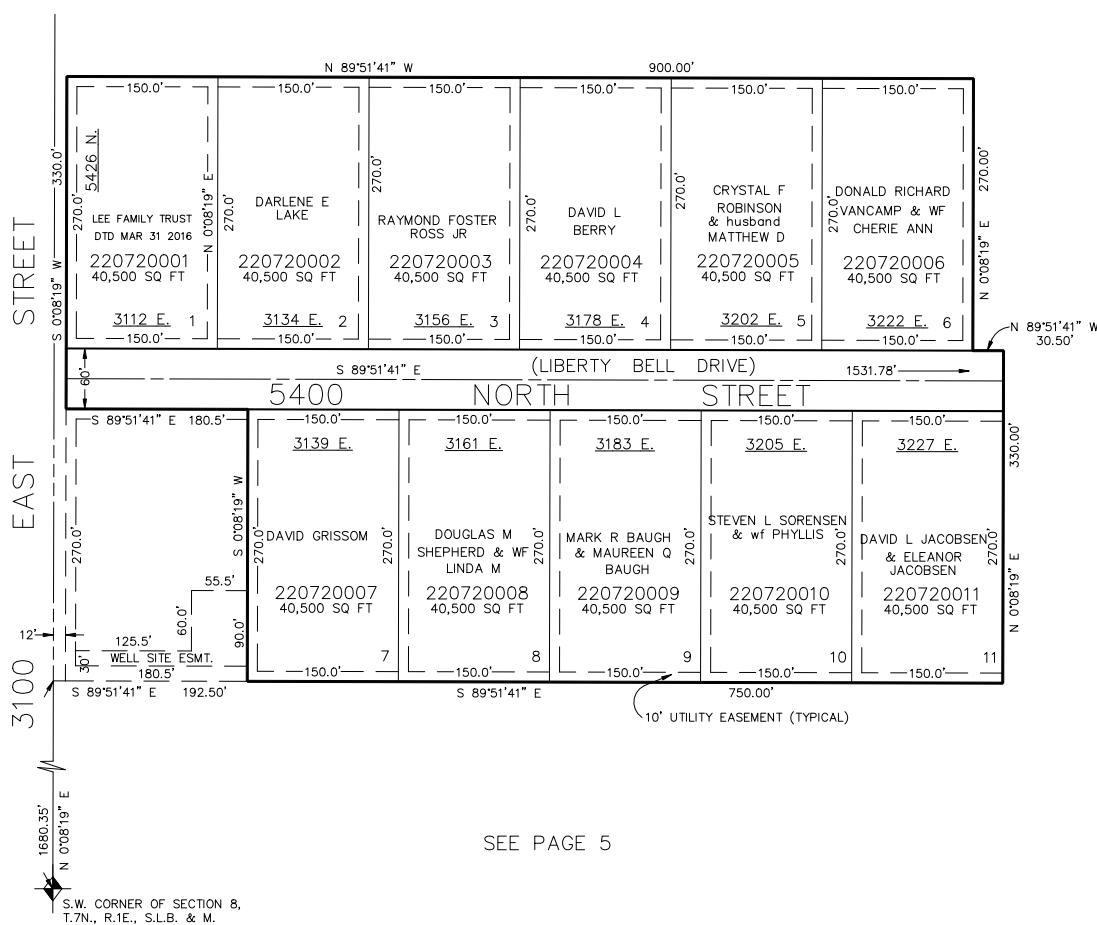


TAXING UNIT: 36

SCALE 1" = 100'

SEE PAGE 5



SEE PAGE 5

SEE PAGE 5

FOR COMPLETE ENG DATA SEE
ORIGINAL DEDICATION PLAT IN
BOOK 21, PAGE 3 OF RECORDS.

FOR TAX PURPOSES ONLY