

PART OF N.E. 1/4 OF SECTION 22, T.7N., R.1E., S.L.B. & M.
WOLF STAR P.R.U.D. PHASE 1 – PLAT B

IN WEBER COUNTY

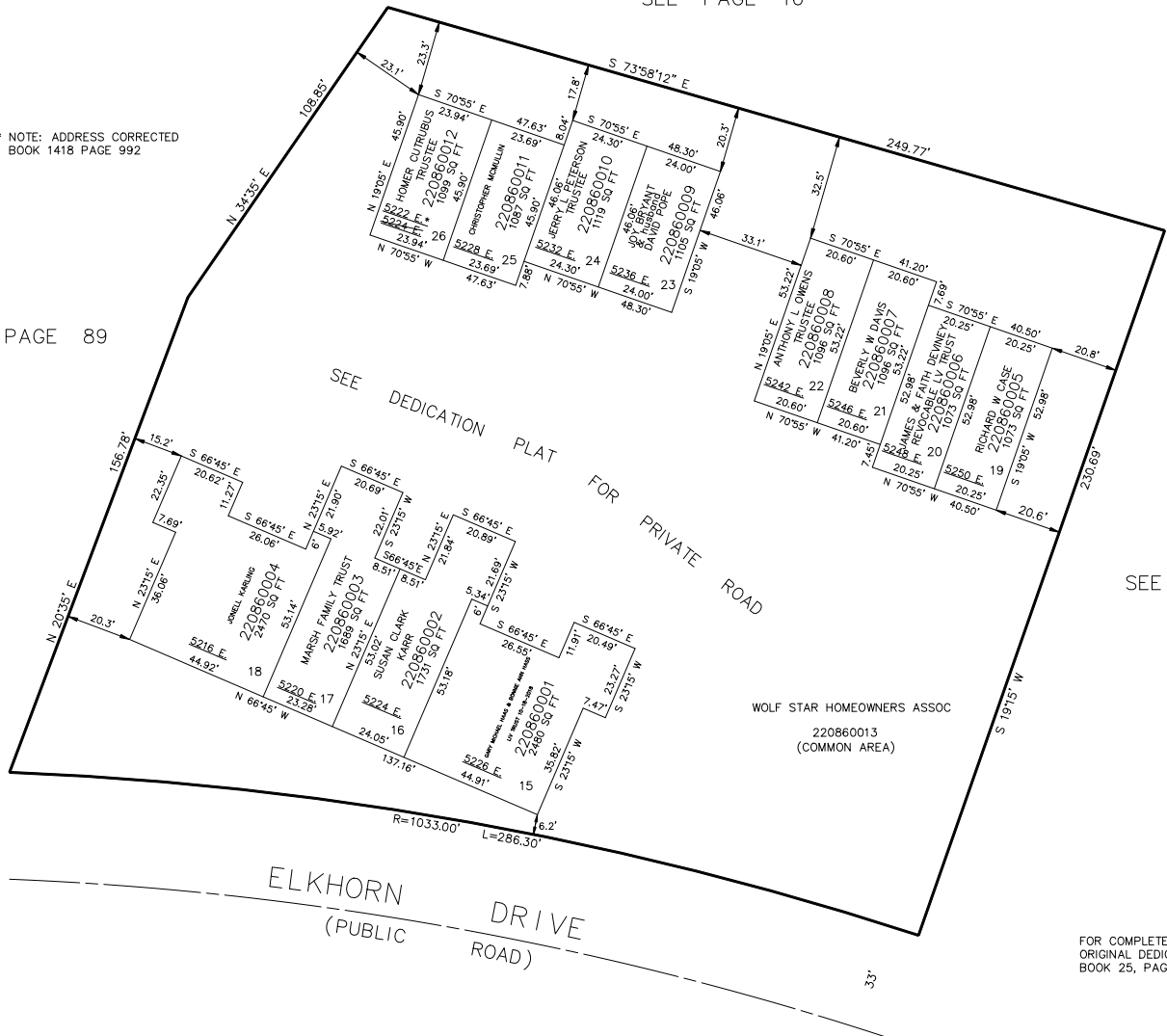
TAXING UNIT: 203

SCALE 1" = 30'

SEE PAGE 16

* NOTE: ADDRESS CORRECTED
BOOK 1418 PAGE 992

SEE PAGE 89



SEE PAGE 16

FOR COMPLETE ENG DATA SEE
ORIGINAL DEDICATION PLAT IN
BOOK 25, PAGE 1 OF RECORDS.

SEE PAGE 85